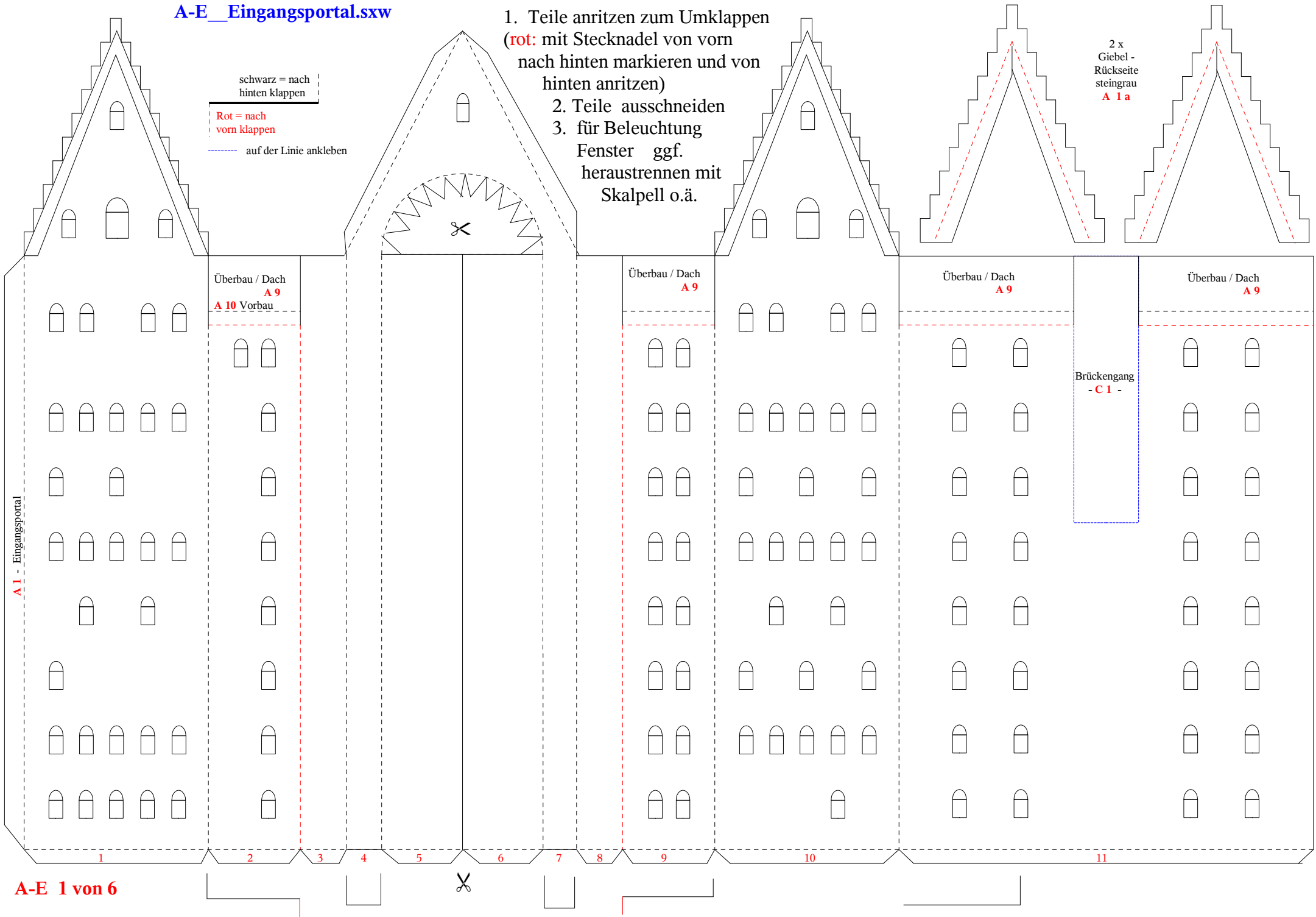


A-E_Eingangsportal.sxw

1. Teile anritzen zum Umklappen
(rot: mit Stecknadel von vorn nach hinten markieren und von hinten anritzen)
2. Teile ausschneiden
3. für Beleuchtung Fenster ggf. heraustrennen mit Skalpell o.ä.

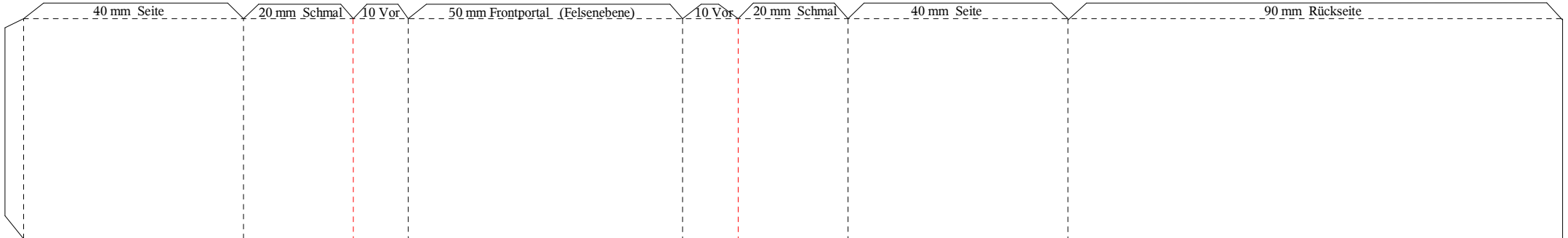
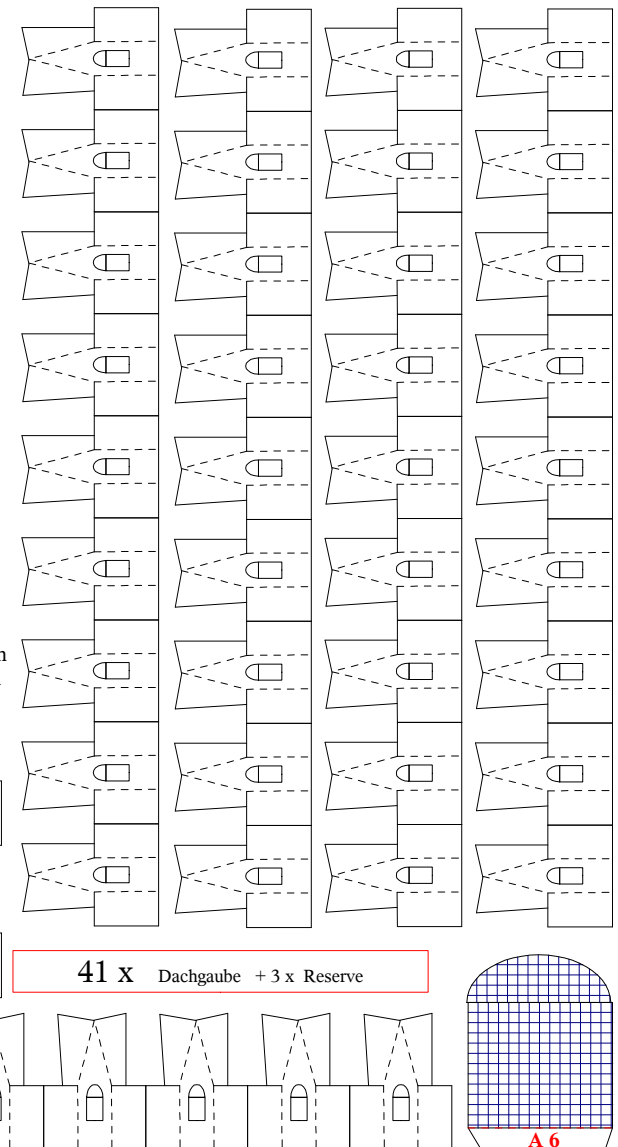
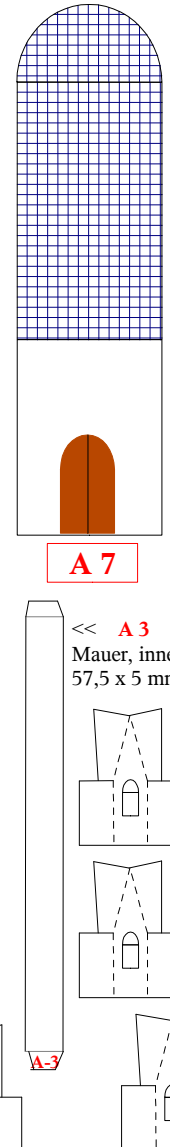
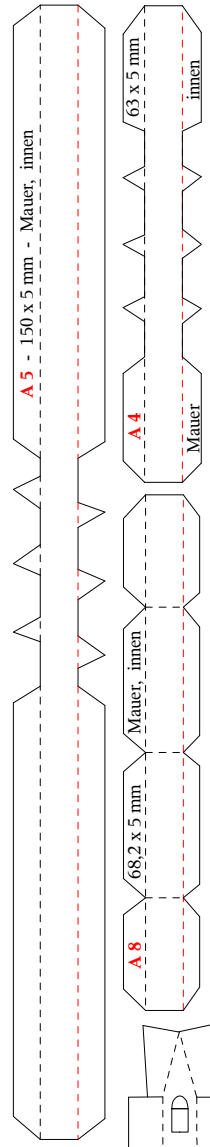
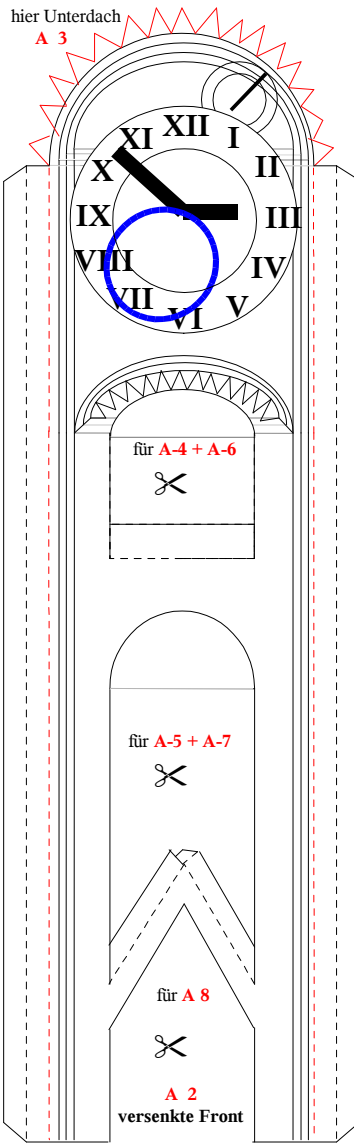
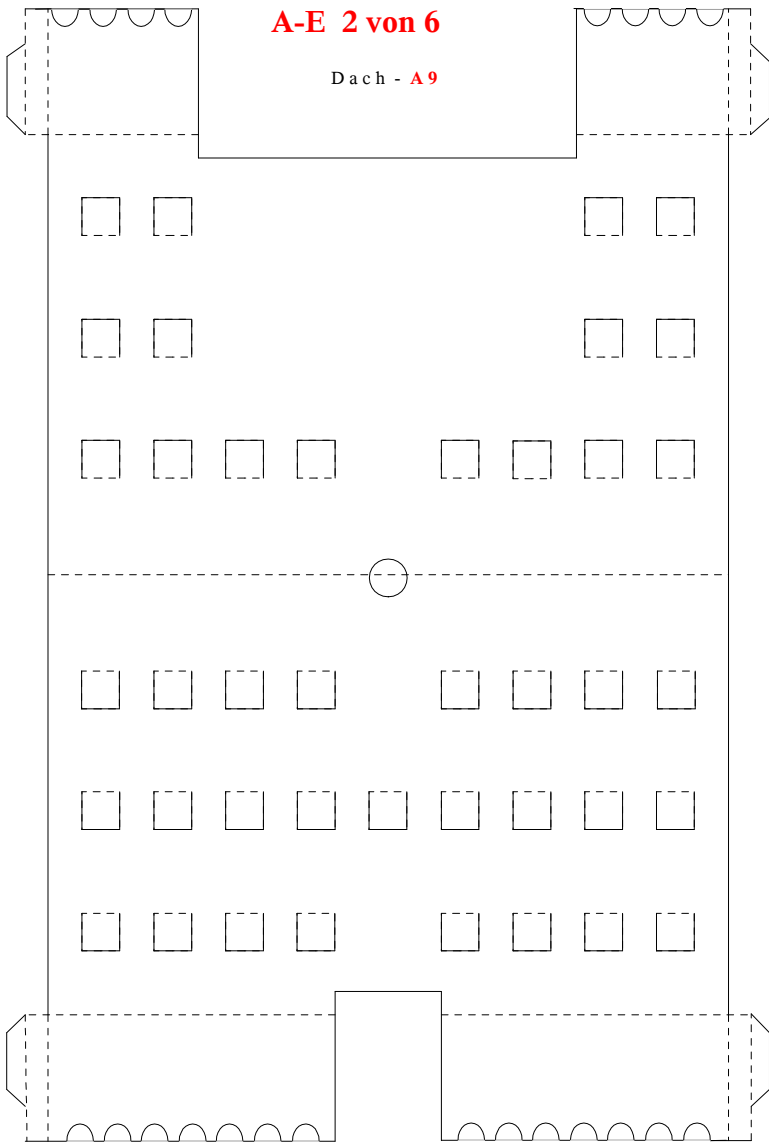
schwarz = nach hinten klappen
Rot = nach vorn klappen
----- auf der Linie ankleben

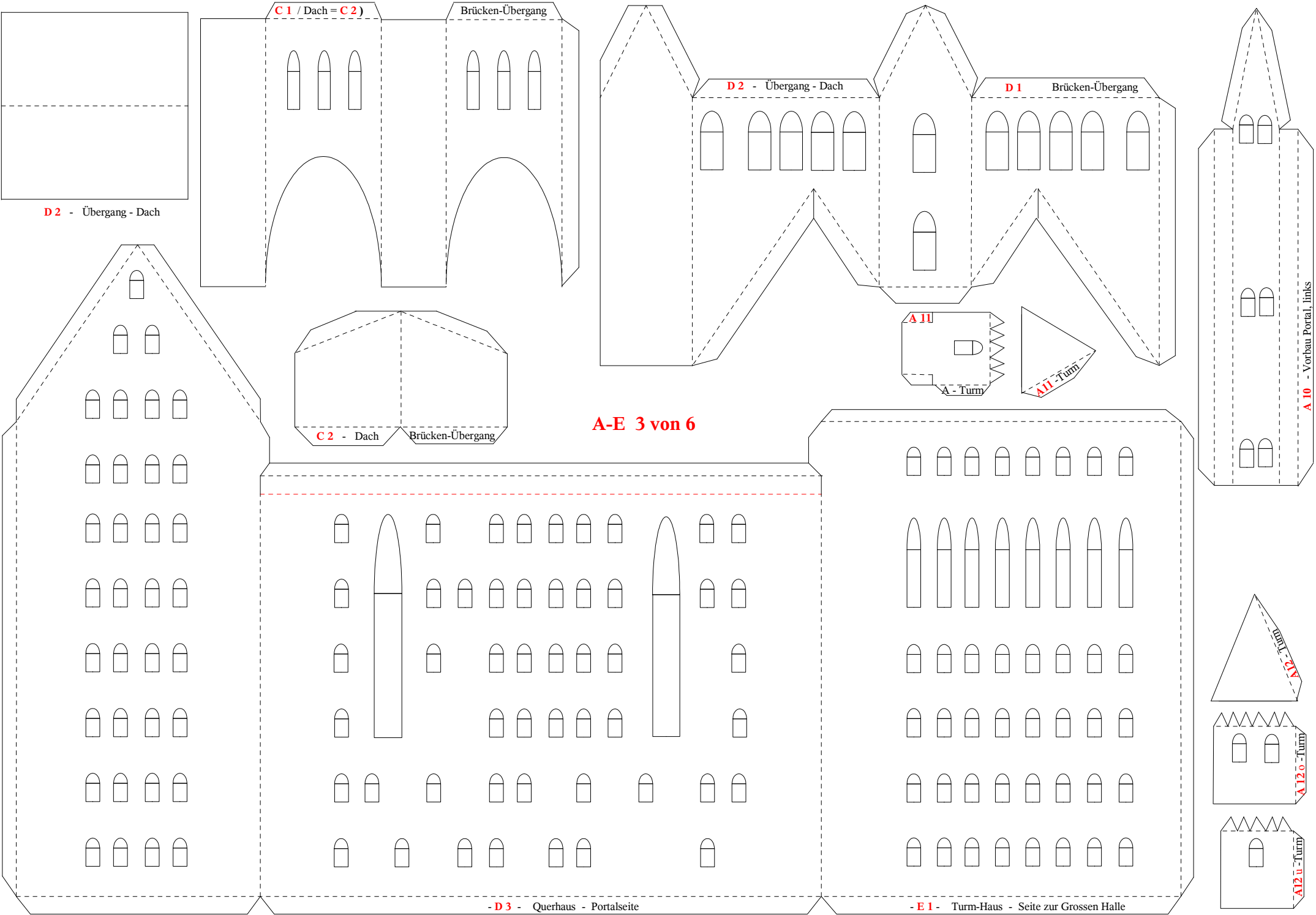
2 x Giebel - Rückseite steingrau
A 1 a



A-E 2 von 6

Dach - A9





C 1 / Dach = C 2

Brücken-Übergang

D 2 - Übergang - Dach

D 1 Brücken-Übergang

D 2 - Übergang - Dach

C 2 - Dach

Brücken-Übergang

A-E 3 von 6

A II

A - Turm

A II - Turm

A 10 - Vorbau Portal, links

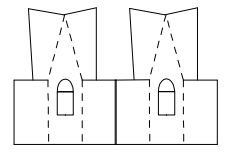
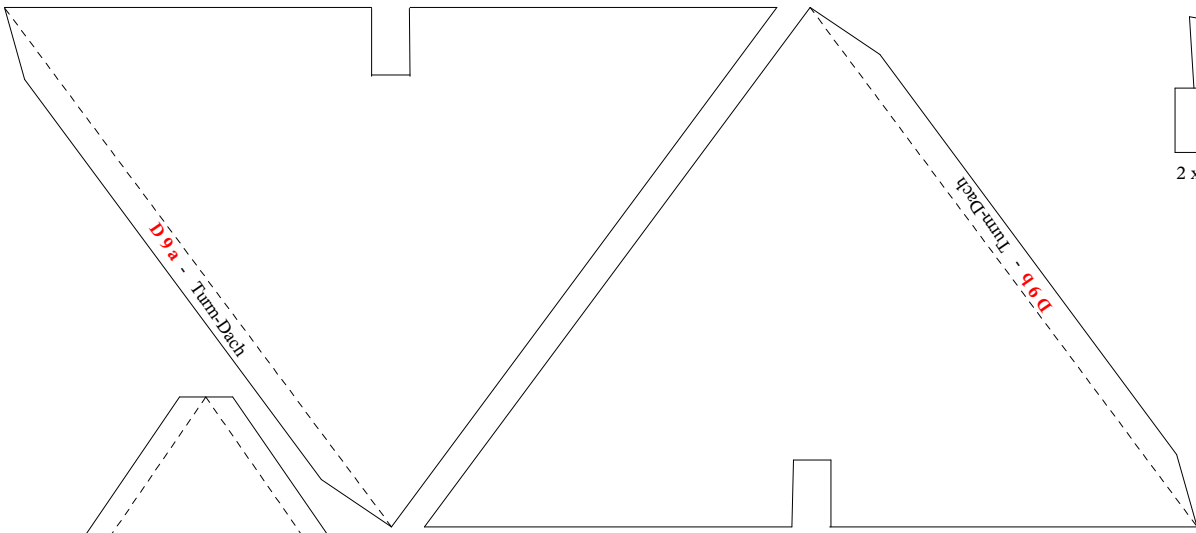
A II - Turm

A 12 b - Turm

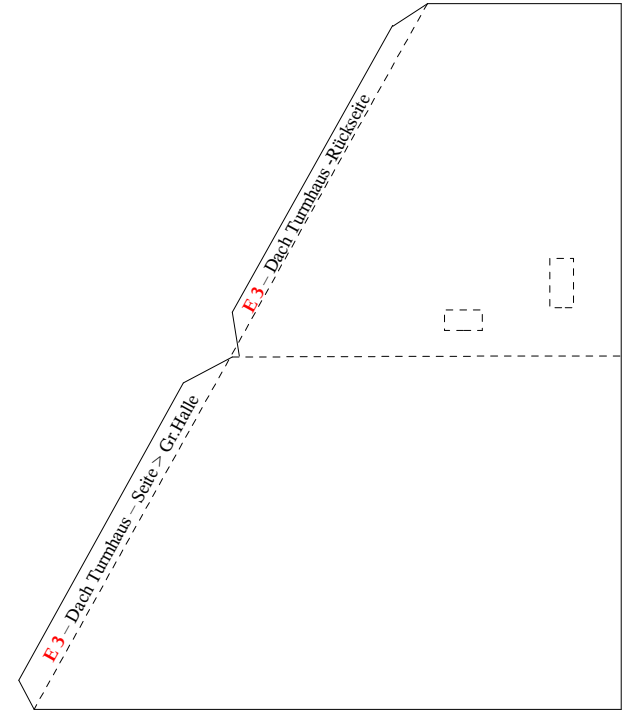
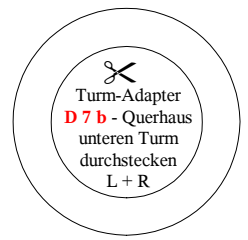
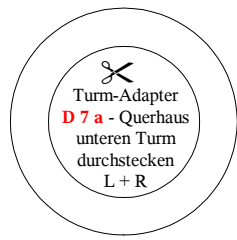
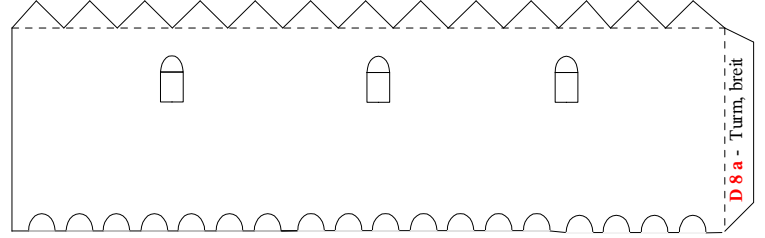
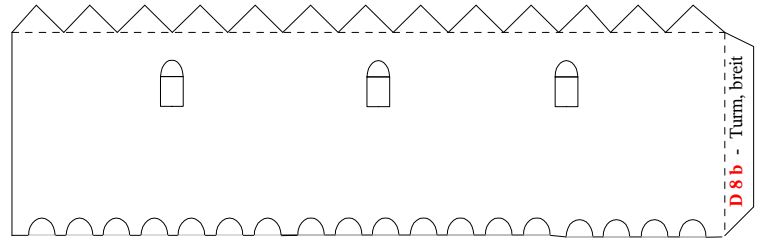
A 12 u - Turm

- D 3 - Querhaus - Portalseite

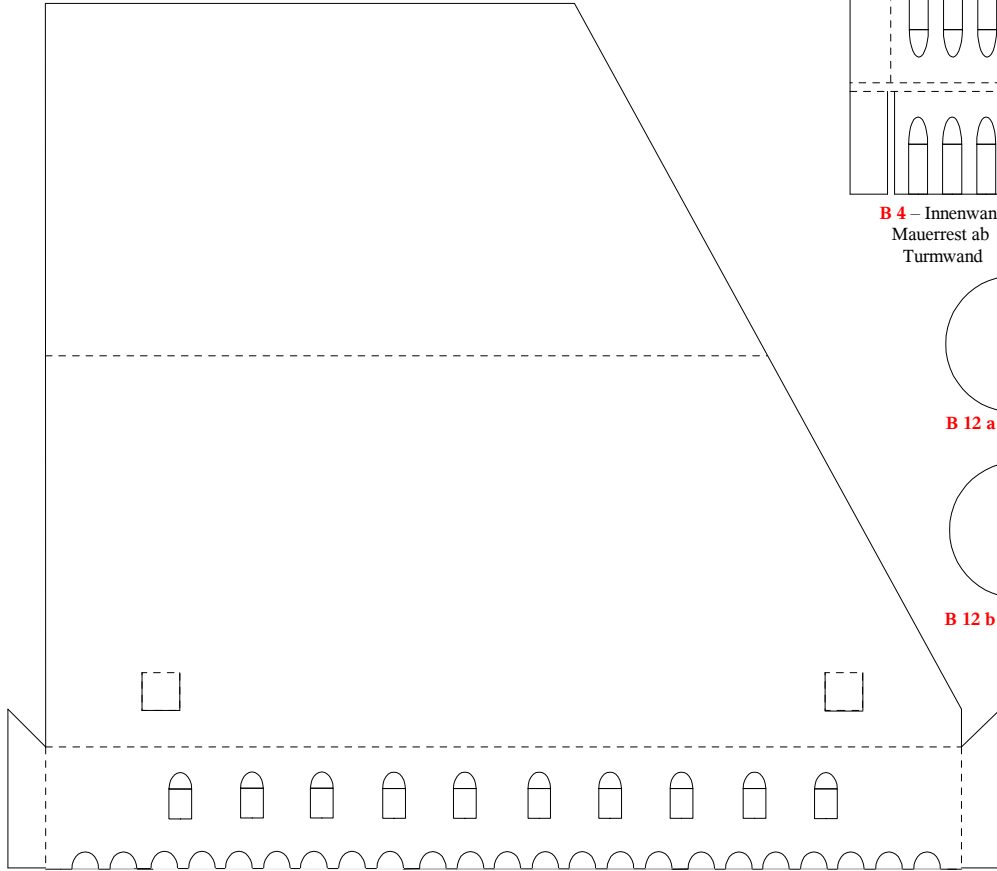
- E 1 - Turm-Haus - Seite zur Grossen Halle



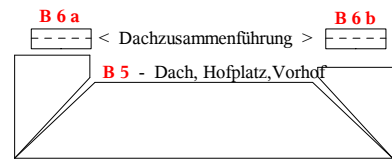
2 x Erker Dach -D 5 -



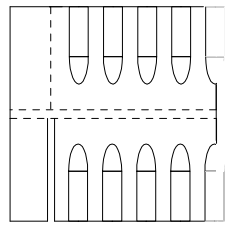
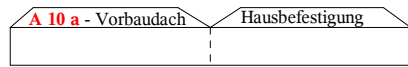
D 5 - Dach Querhaus - Rückseite



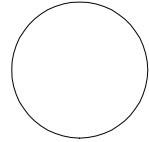
D 5 - Dach Querhaus - Portalseite mit Überhang / Vorbau



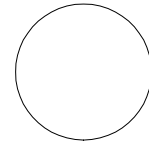
A-E 5 von 6



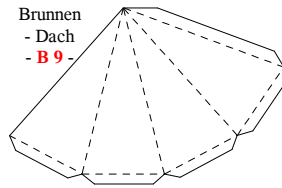
B 4 - Innenwand
Mauerrest ab
Turmwand



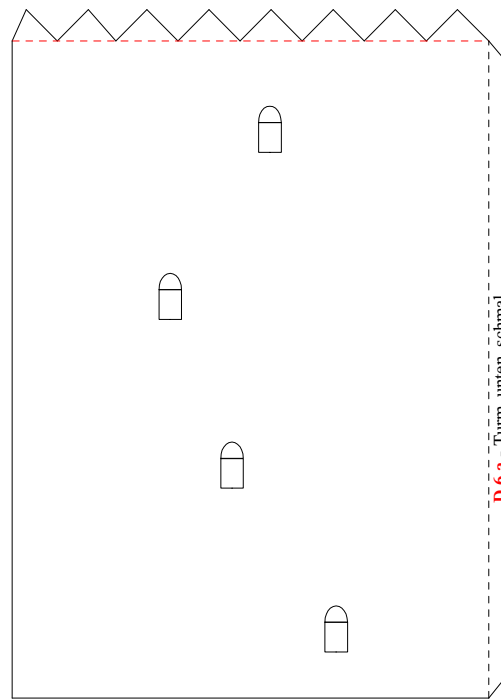
B 12 a - Turmplatte



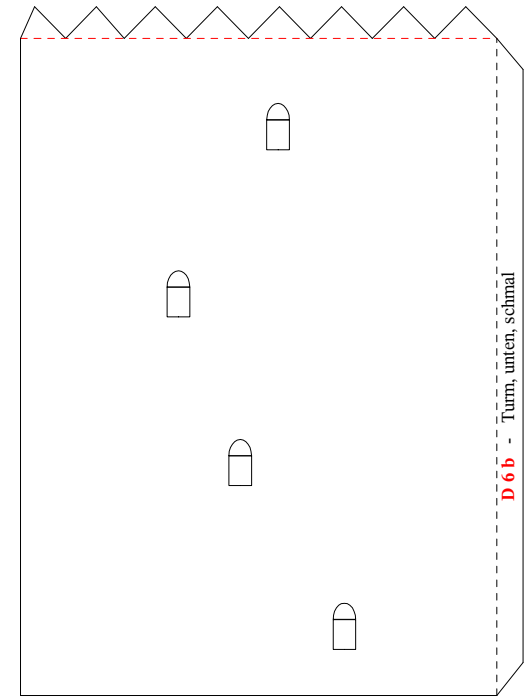
B 12 b - Turmplatte



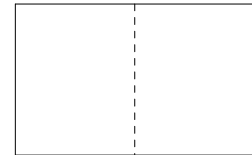
Brunnen
- Dach
- B 9 -



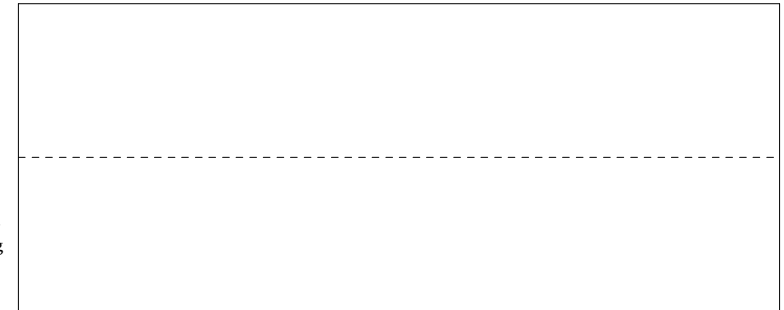
D 6 a - Turm, unten, schmal



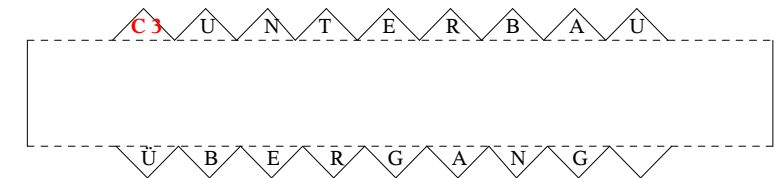
D 6 b - Turm, unten, schmal



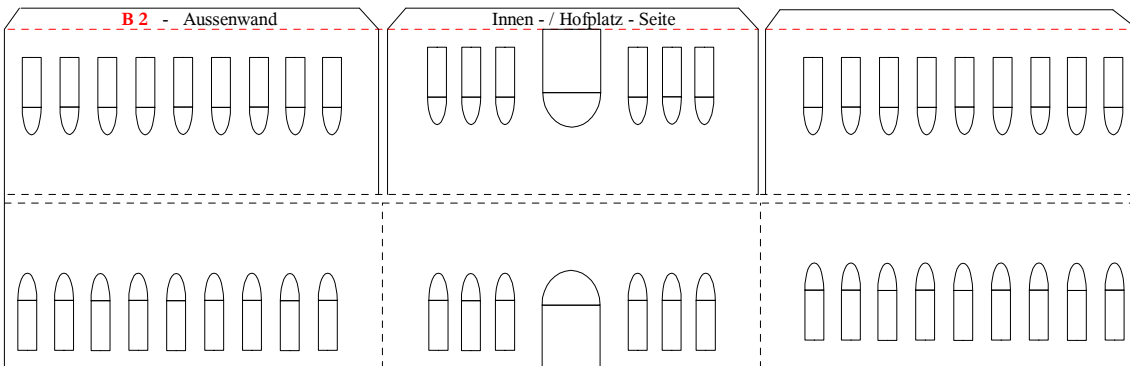
B 18 Torhaus-Dach



- B 16 -
Eingang
Brücke
Dach

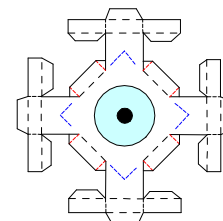


- C 3 - Brücken-Übergang - Unterbau

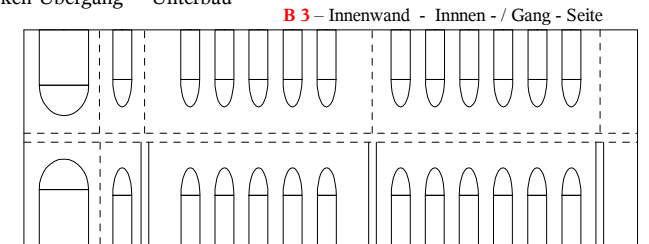


B 2 - Aussenwand

Innen - / Hofplatz - Seite

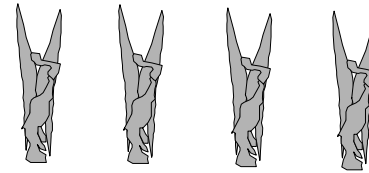
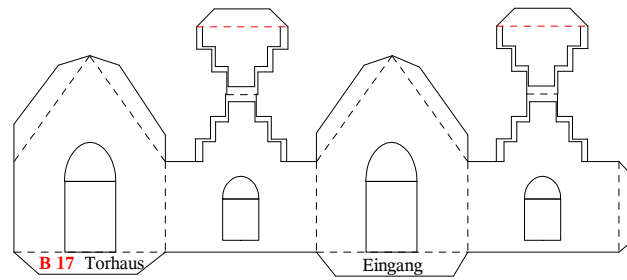
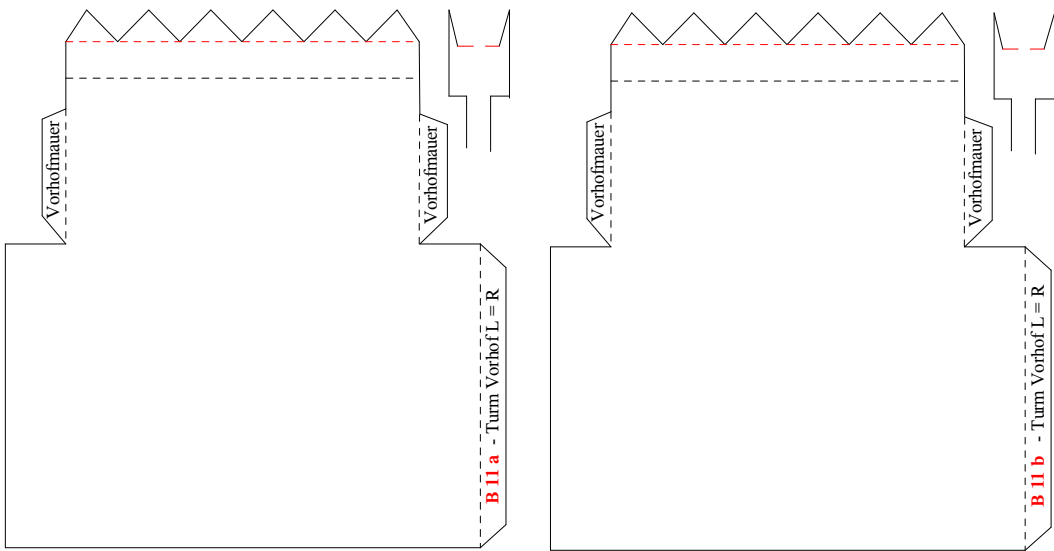


B 7 - Brunnen

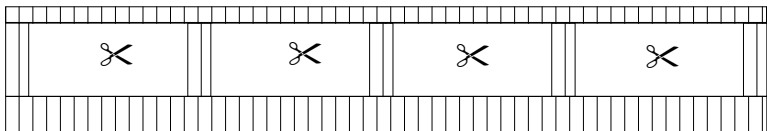
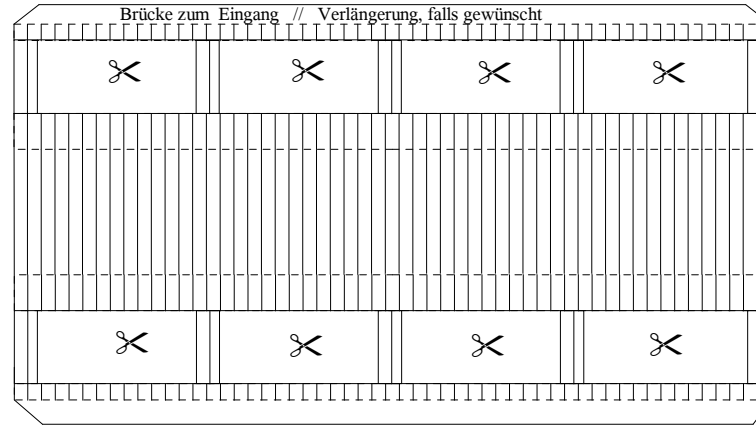
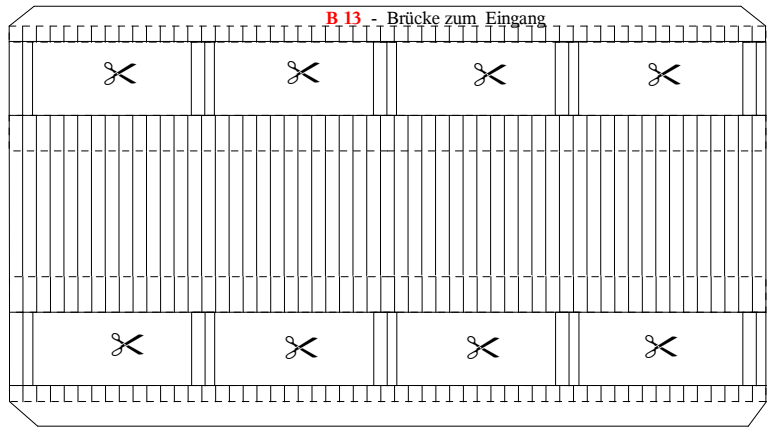
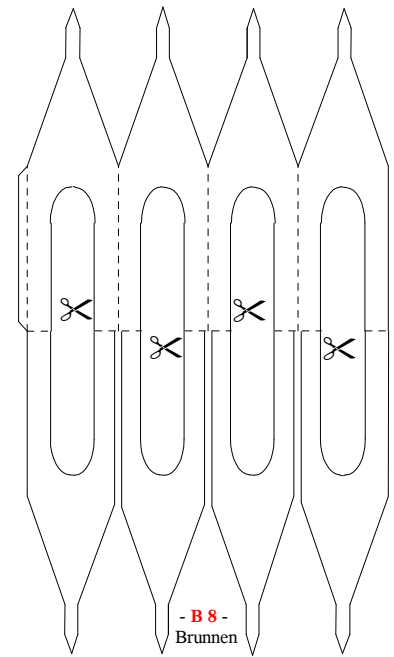


B 3 - Innenwand - Innen - / Gang - Seite

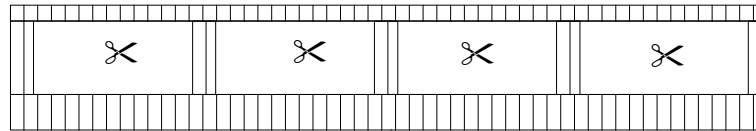
B 3 - Innenwand - Innen - / Hofplatz - Seite



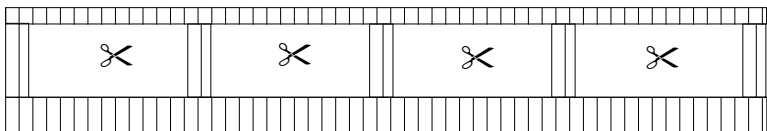
4 x Brunnenfigur
im 45°-Winkel
auf die Ecken
kleben.
- B 10 - 4x



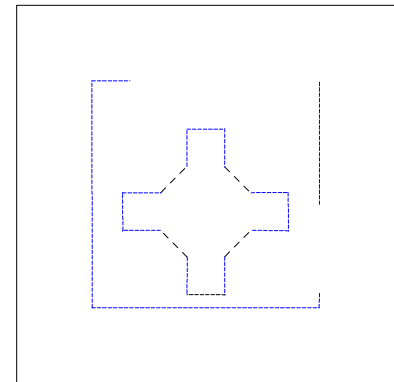
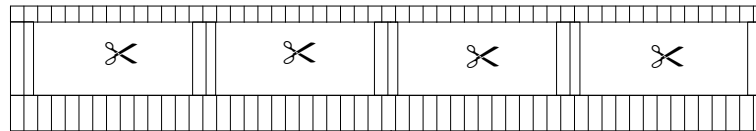
- B 14 a -
Brückenseite,
innen



- B 14 b -
Brückenseite,
innen



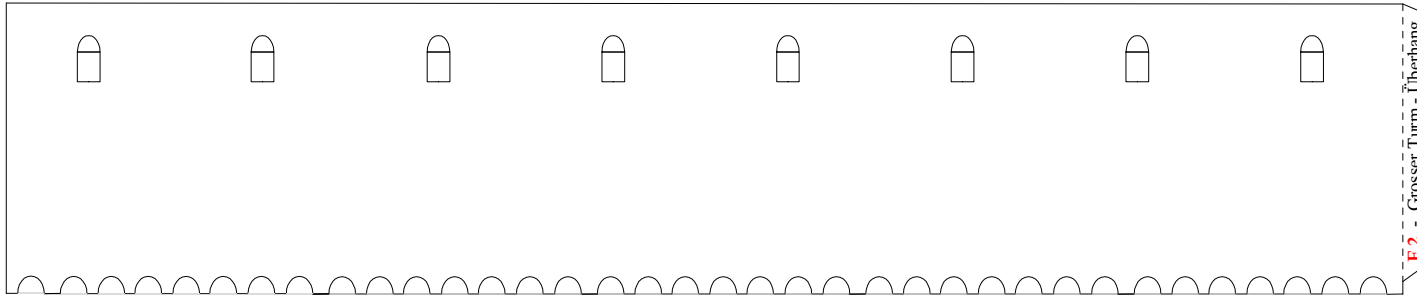
- B 15 -
Brückenweg,
innen



B 1 - Hofplatz - Vorhof

Tipp : Zündhölzer (ohne Kopf und auf Länge geschnitten - 15mm), die mit brauner Wasserfarbe angemalt wurden und als zusätzliche Trennungen (Stützen) hinter die Öffnungen geklebt werden, geben dem Modell noch mehr 3-Dimensionalität. Die Schnittflächen können durch braune Farbe optisch ebenfalls "veredelt" werden.

Soll : D = 58,8 mm // B = 184,7 mm

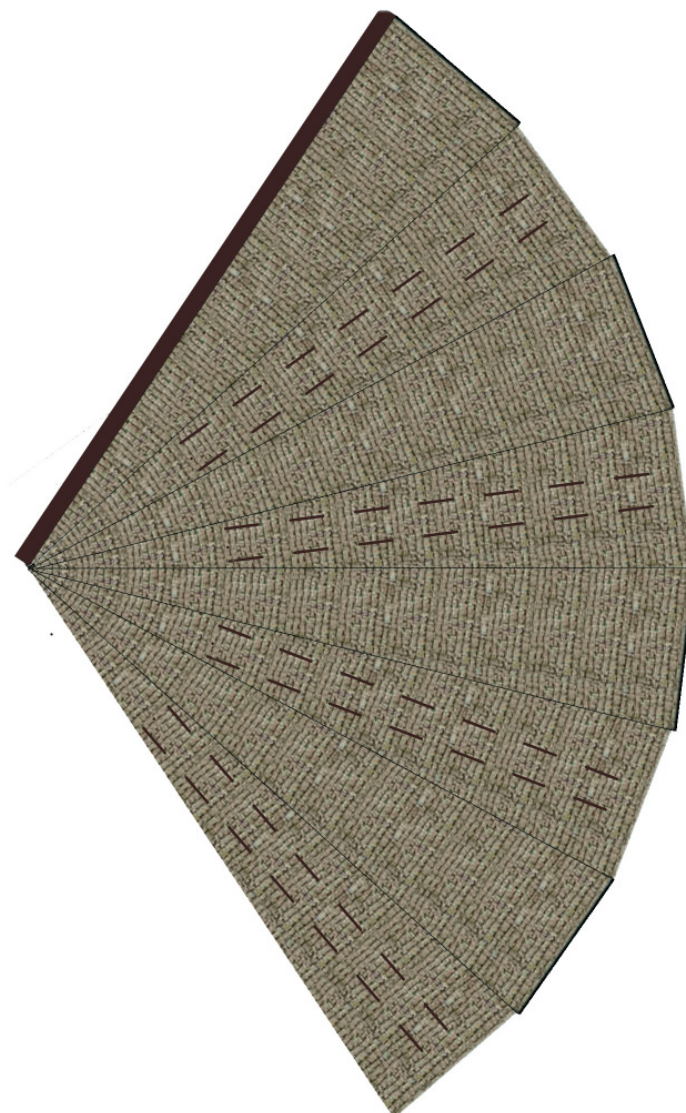
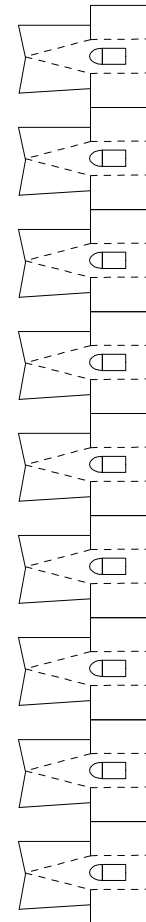
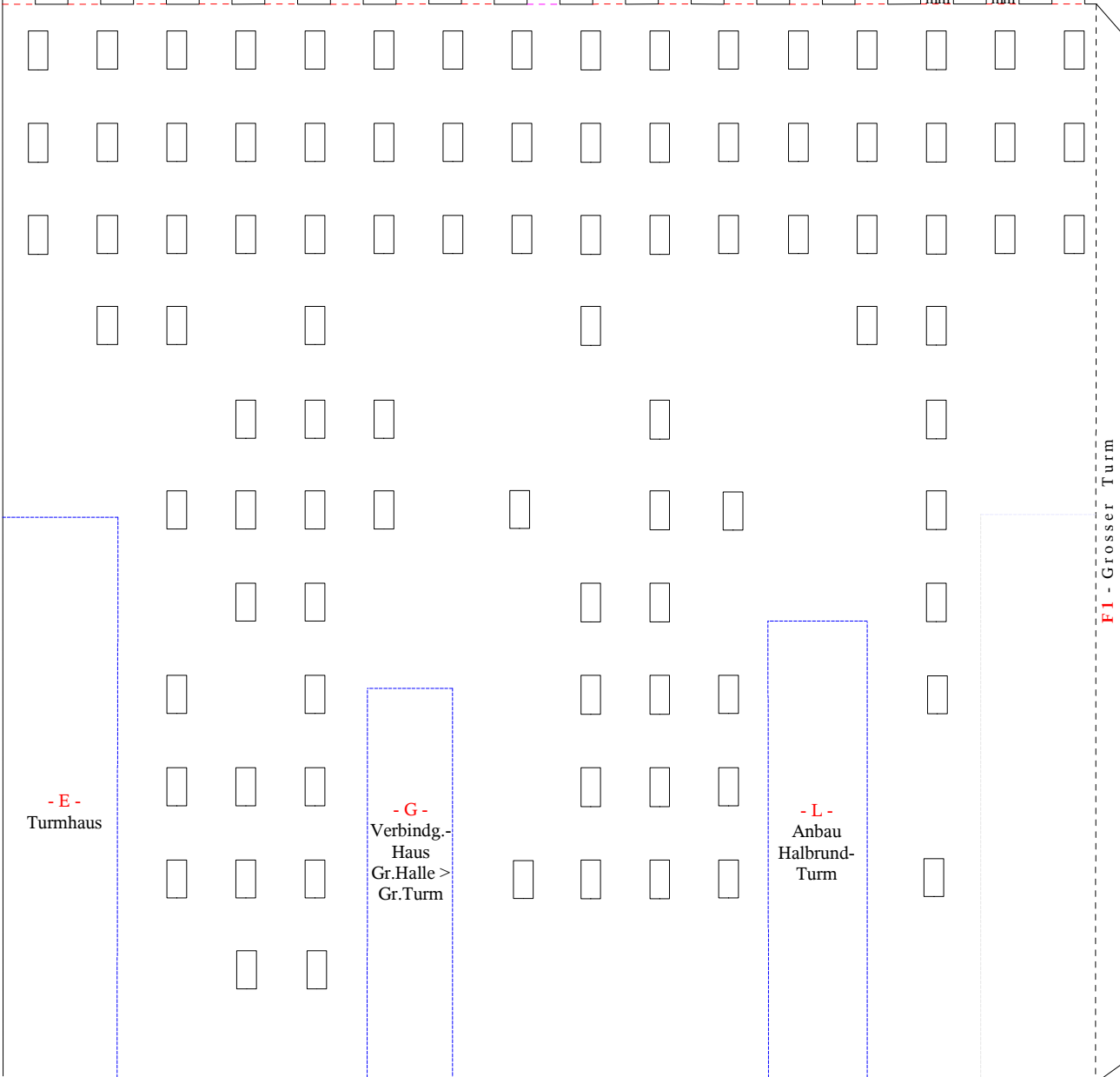


schwarz = nach
hinten klappen

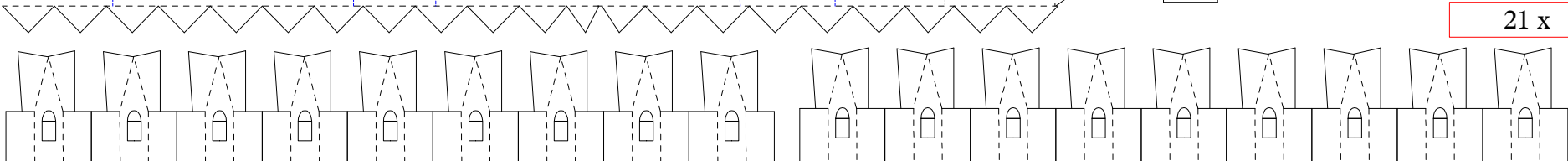
Rot = nach
vorn klappen

----- auf der Linie ankleben

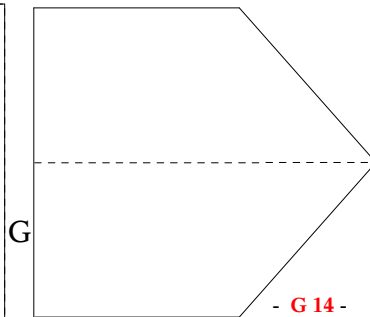
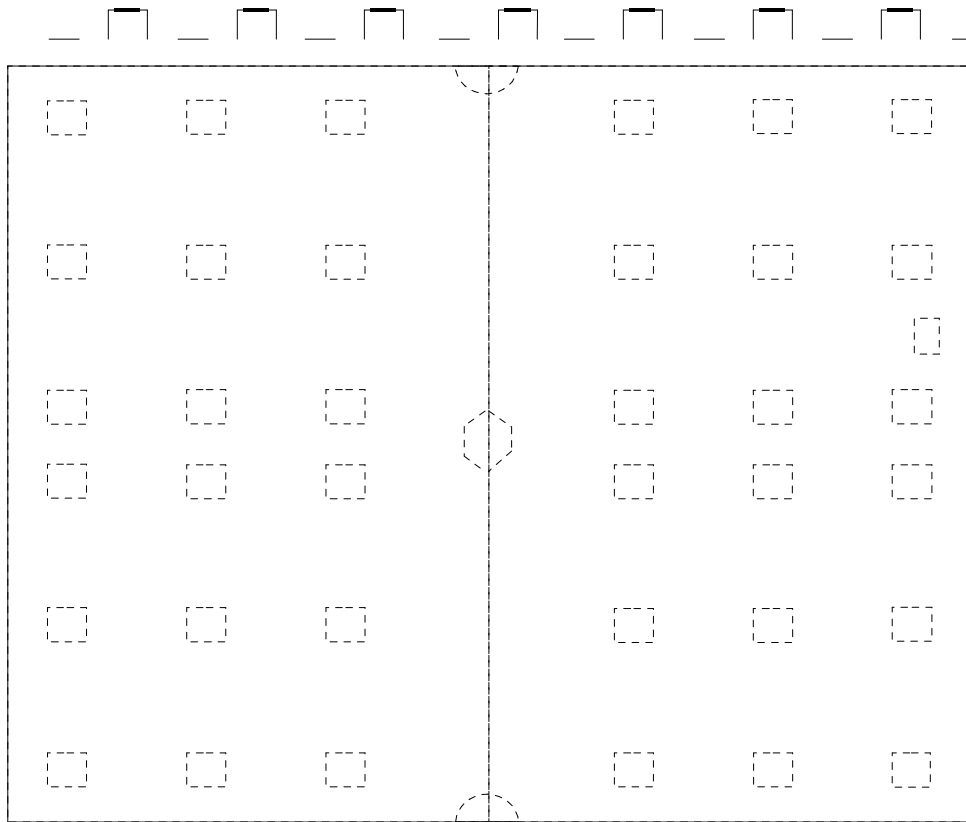
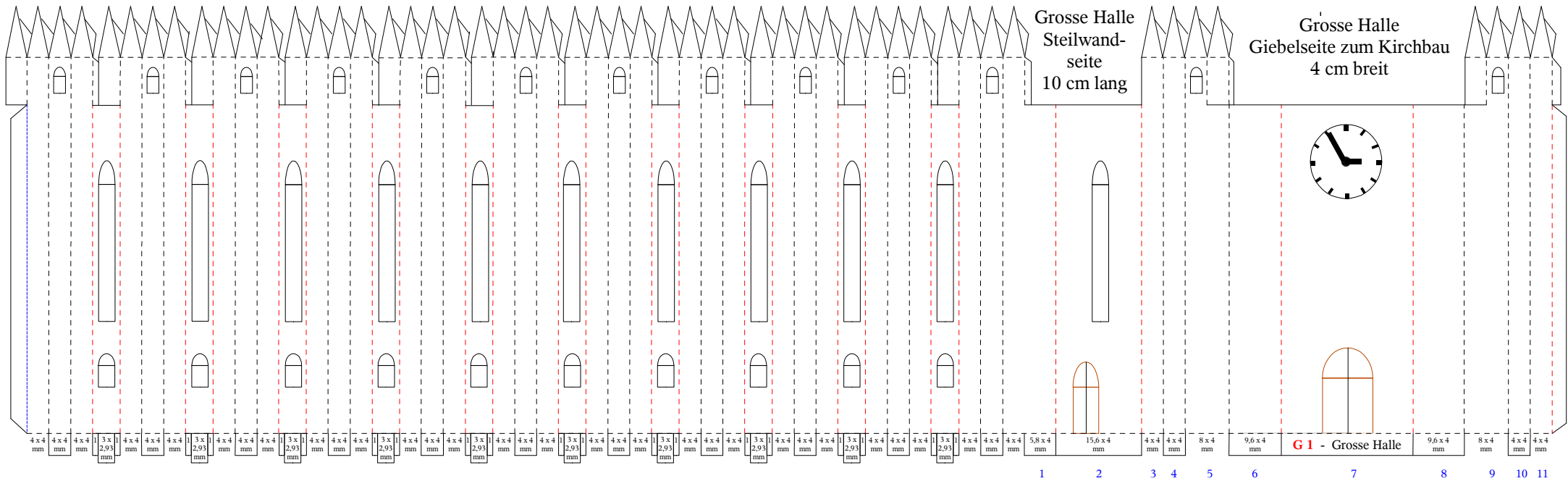
Üb erh ang an kle ben von inn en Ø = 53 mm H = 164 mm



F 3 - Dach - Grosser Turm

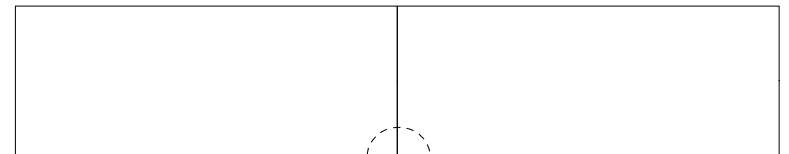
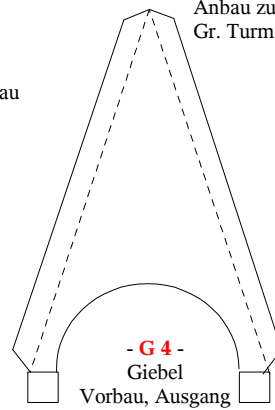


21 x Dachgaube + 6 x Reserve



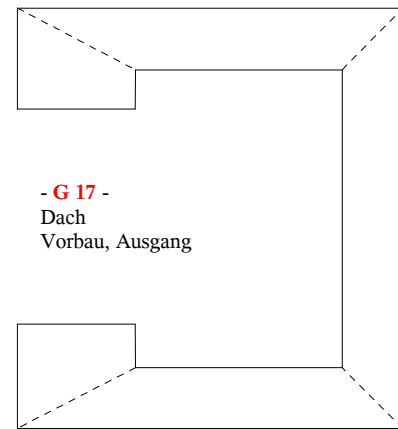
- G 6 -
Dach
Hauptbau

- G 14 -
Dach
Anbau zum
Gr. Turm

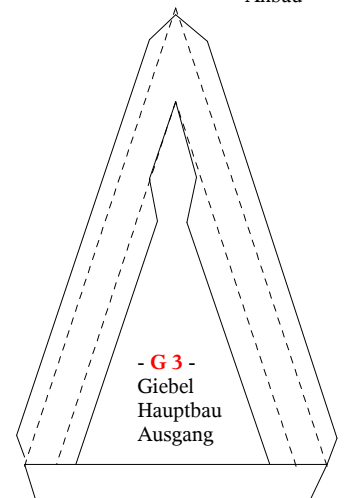


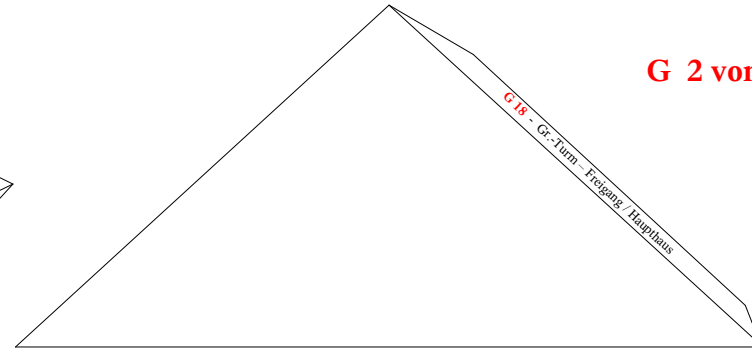
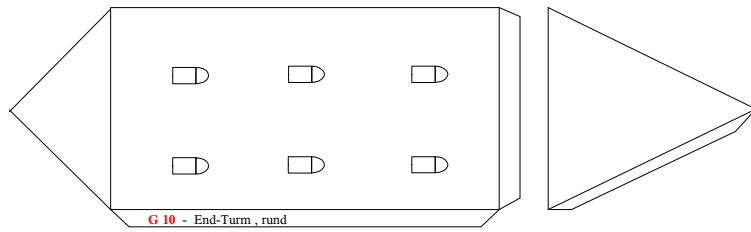
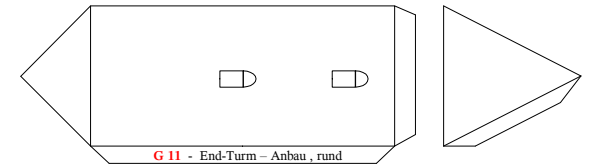
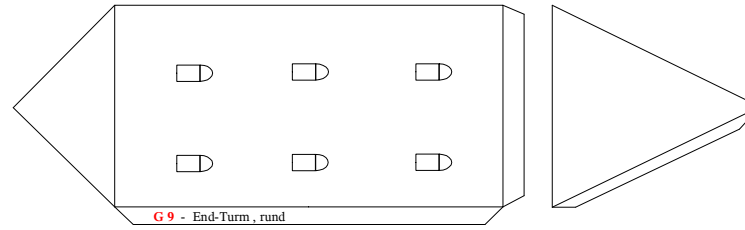
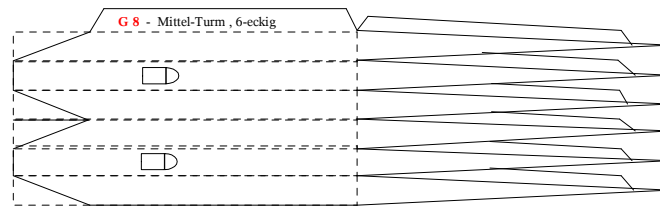
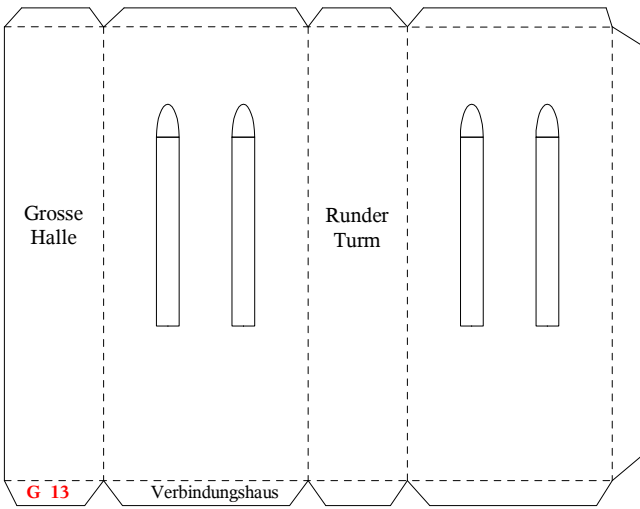
Grosse_Halle.sxw

- G 7 -
Dach
Anbau

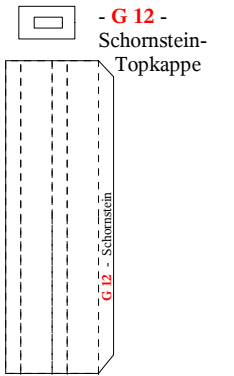


G 1 von 3

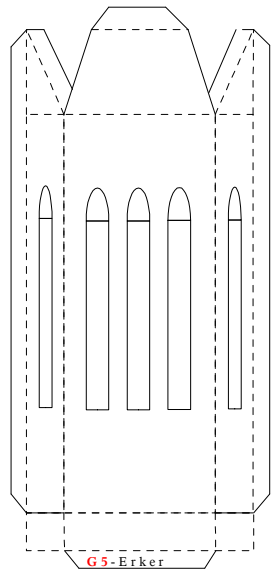
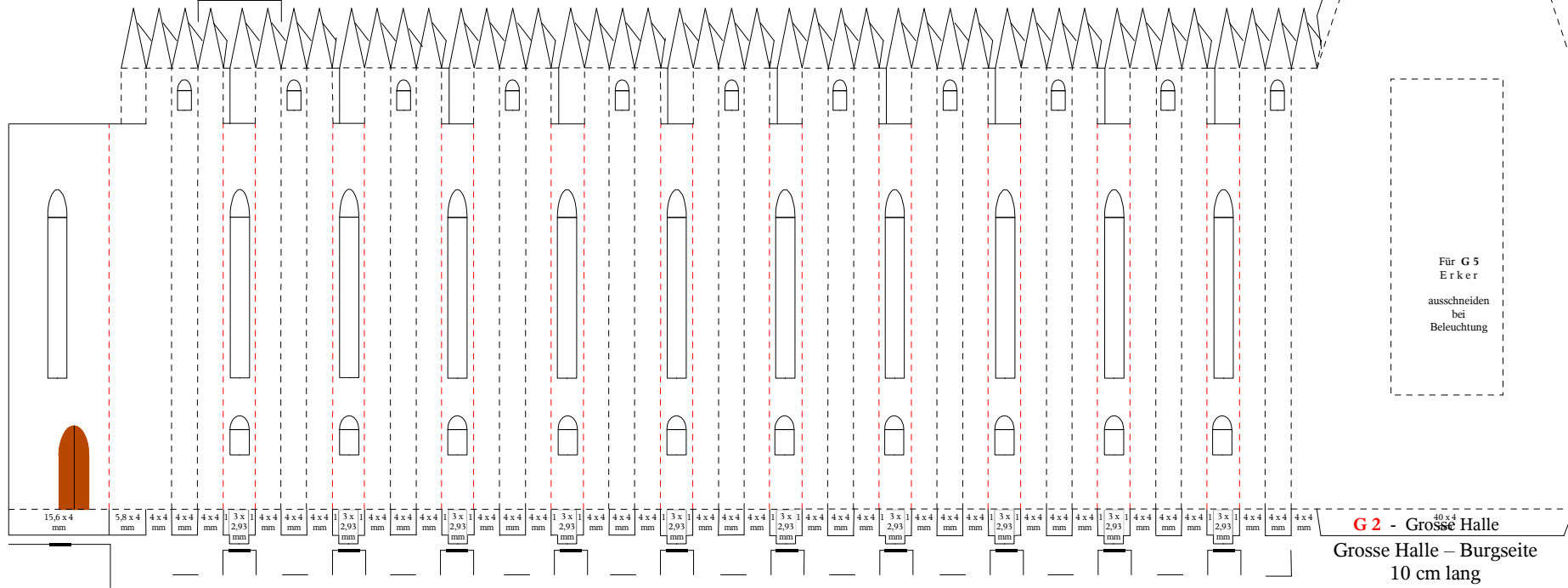




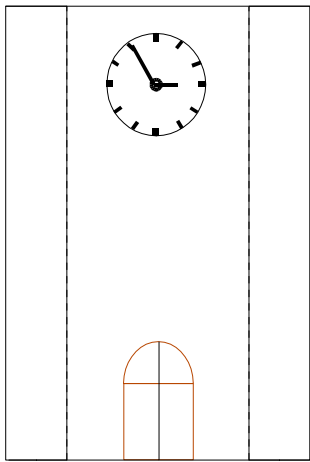
G 2 von 3



13 mm Anbau



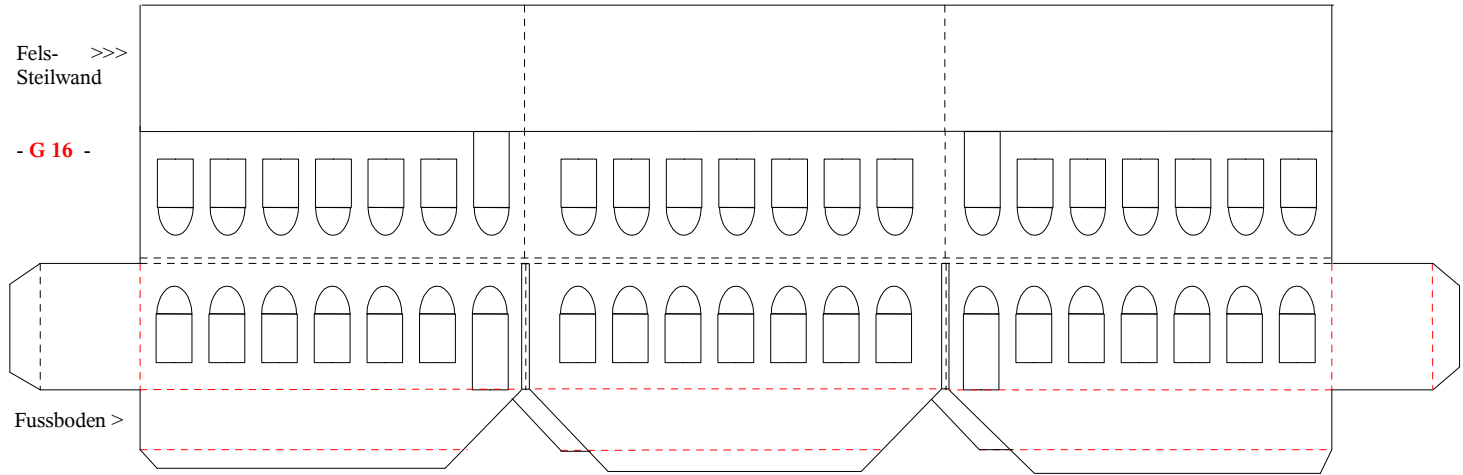
Grosse Halle - Burgseite
10 cm lang



Fels- >>>
Steilwand

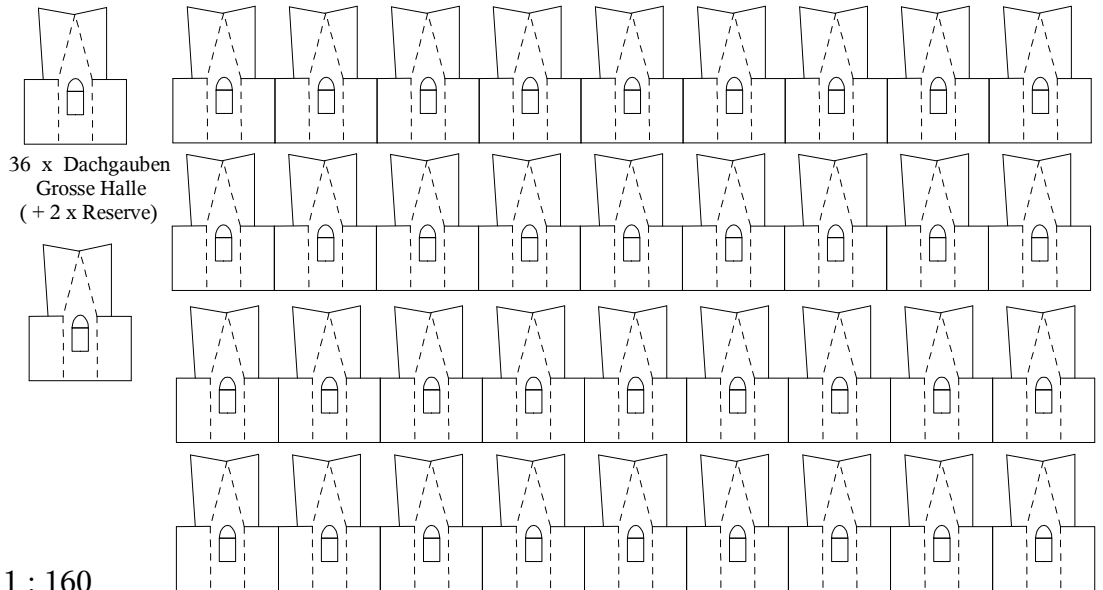
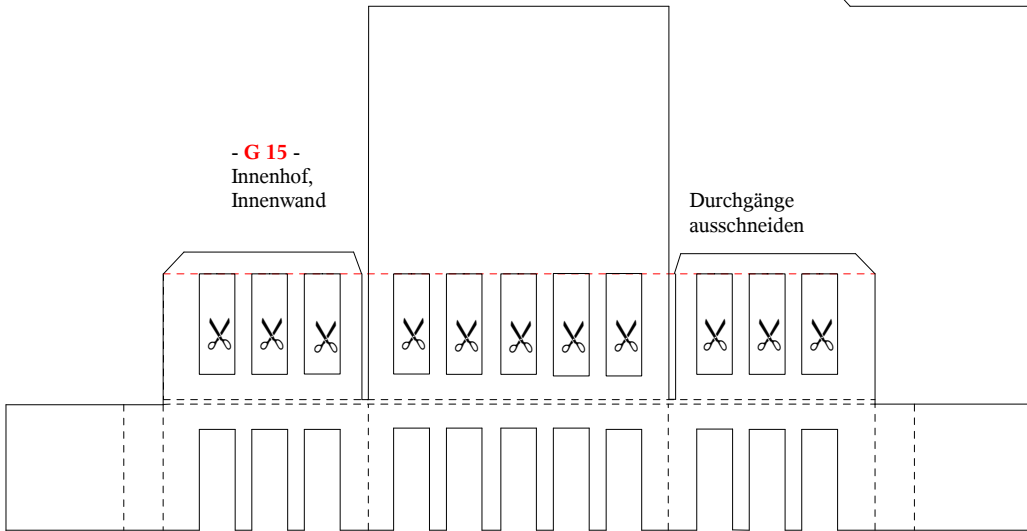
- G 16 -

Fussboden >



- G 15 -
Innenhof,
Innenwand

Durchgänge
ausschneiden



Grundriss Hogwarts

(weder detailgetreu, noch authentisch, da einige Bauten fehlen) – Maszstab 1 : 160

Die Grundrisse sind den Harry-Potter-Filmaufnahmen entnommen, soweit dies überhaupt möglich ist. Die Filme Teil 1 – 5 haben unterschiedliche Bebauungen. Daher ist ein endgültig festgelegter Grundriss hier nicht möglich. Zwei Varianten sind hier aufgezeigt.

Der Kirchbau ist ein modifizierter Aufbau des Schreiberbogens Nr. 548 im Maszstab 1:300, der sich aber gut einfügt.

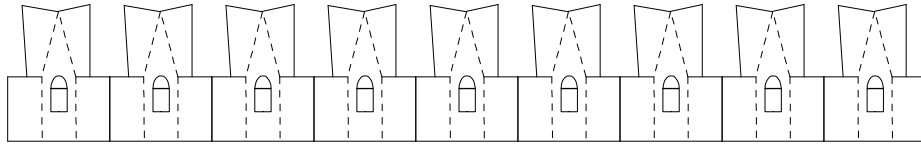
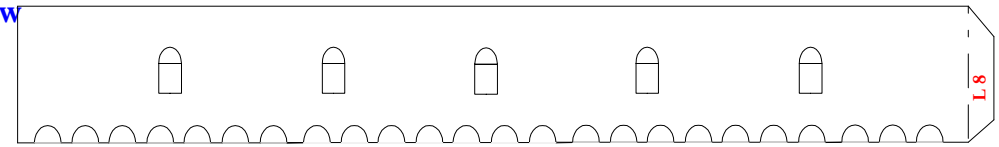
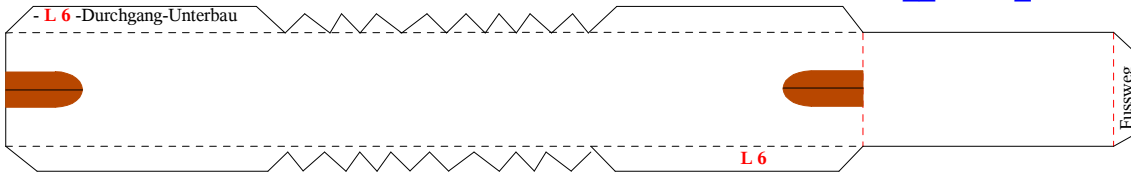
Alle anderen Bauten sind von mir nach den Filmaufnahmen nachempfunden. Dabei ist es wichtig, dass die einzelnen Gebäude NICHT direkt erreichbar sind, da es sich um einen tiefgeklüfteten Felsen handelt (daher die Brücken)

The plans are taken from the Harry-Potter-movies part 1 to 5, as far as it was possible at all, because they have used different buildings / locations. So, a final design is impossible. Two different possibilities are shown here.

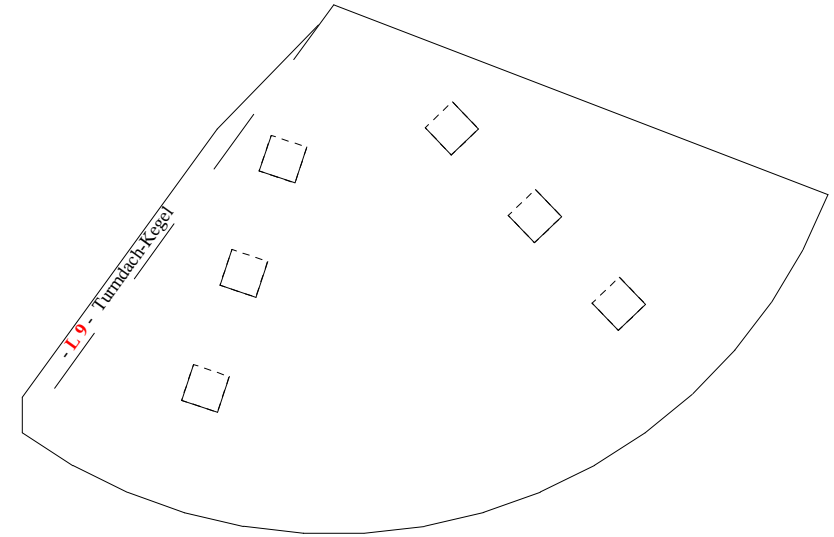
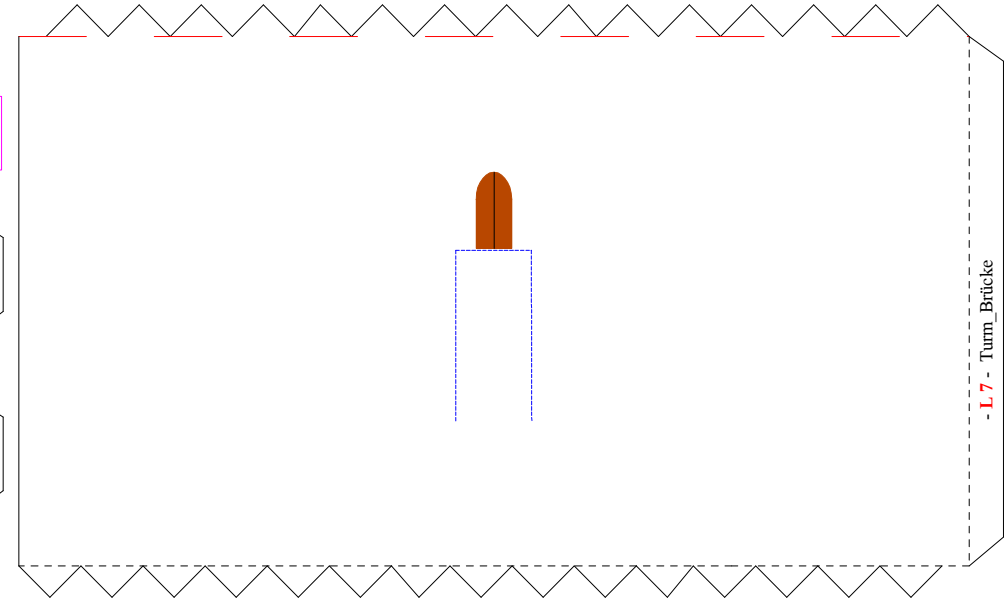
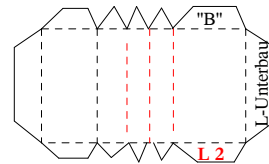
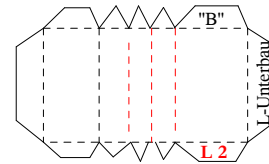
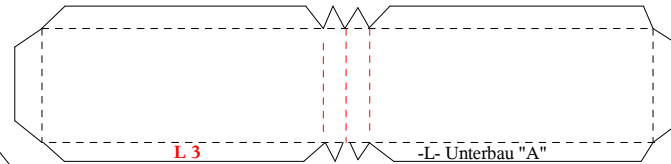
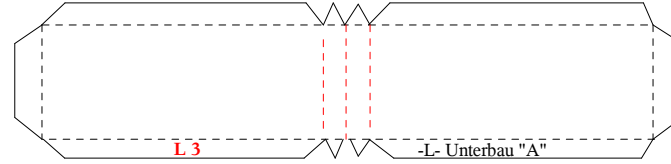
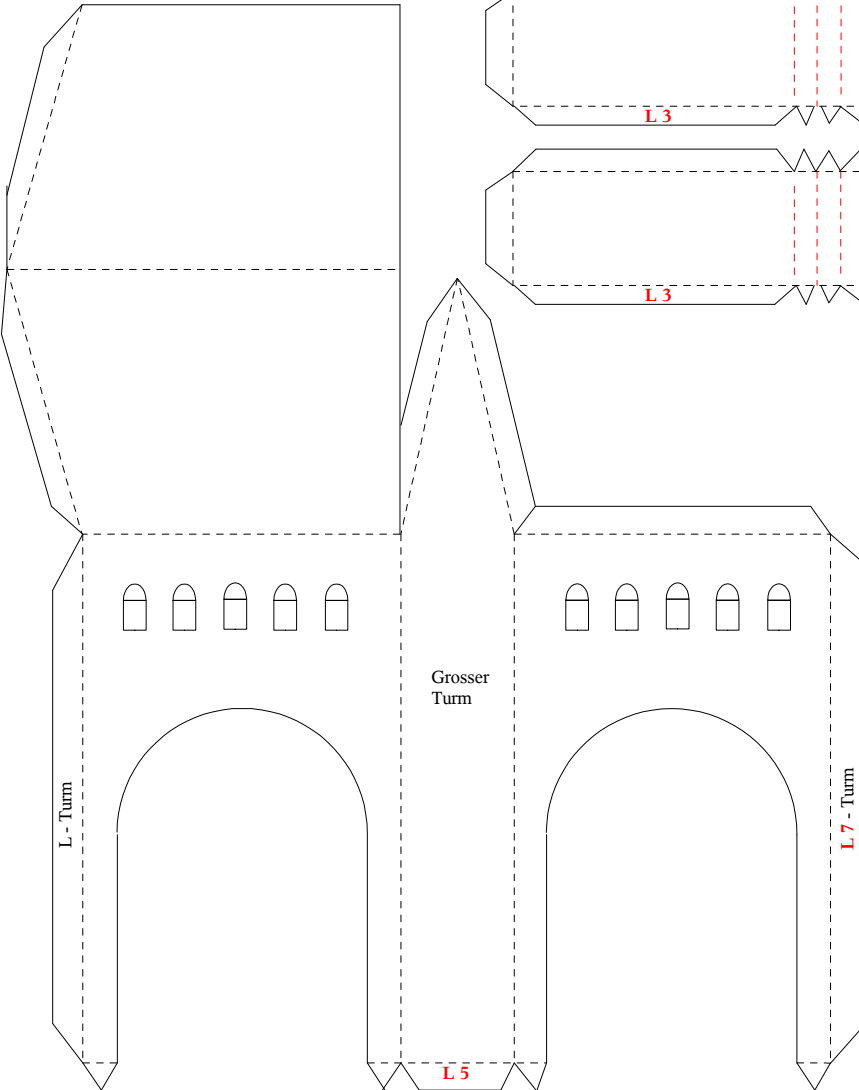
The churchbuilding is a modification of "Schreiber Modellbaubogen", No. 548 in scale 1:300, which fits excellent in here.

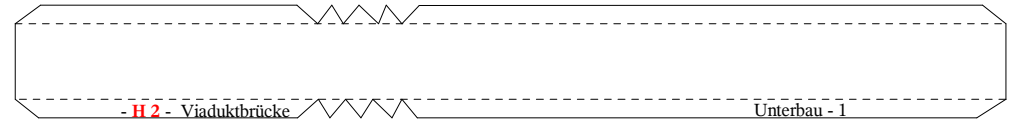
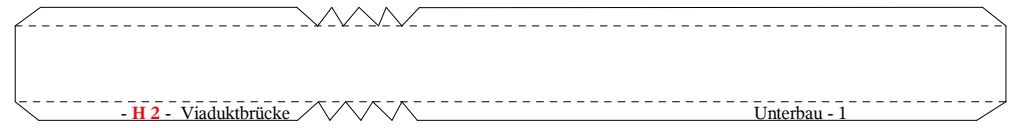
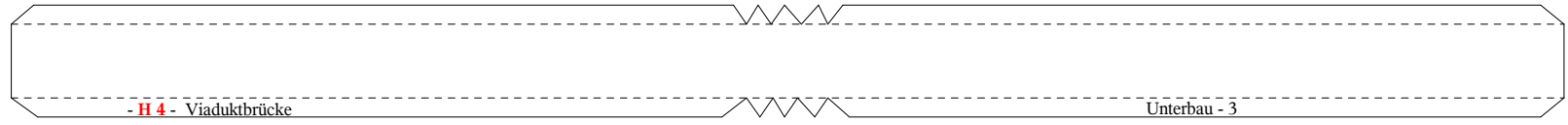
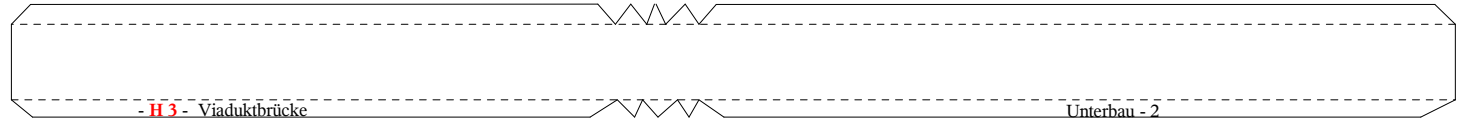
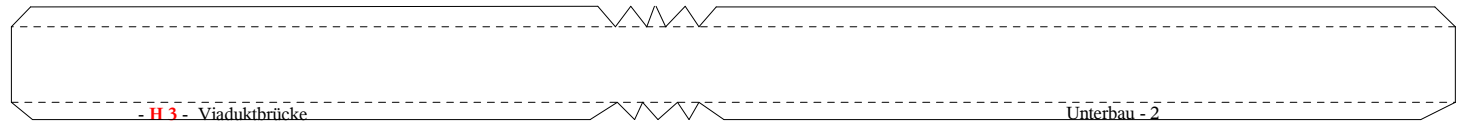
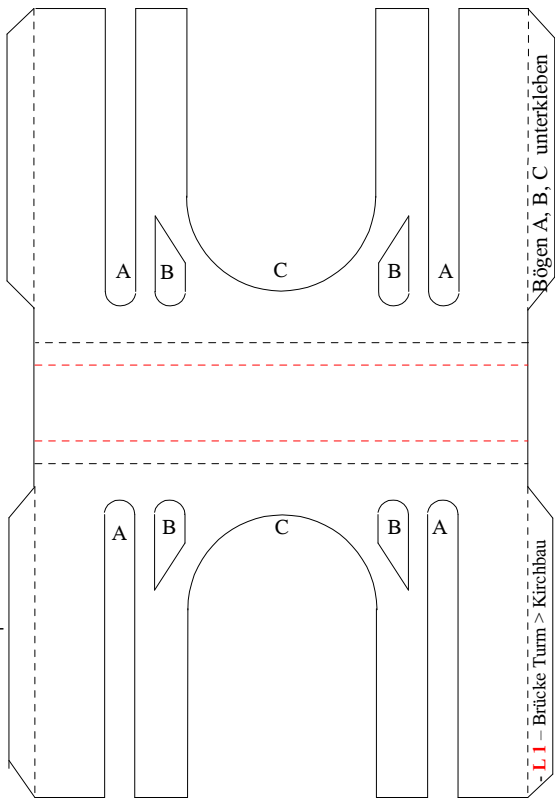
G 3 von 3

All other buildings are made by me just watching the movies. It is important to know, that the buildings can't be reached directly because of the rocks, the castle is built on (that's why they use bridges).

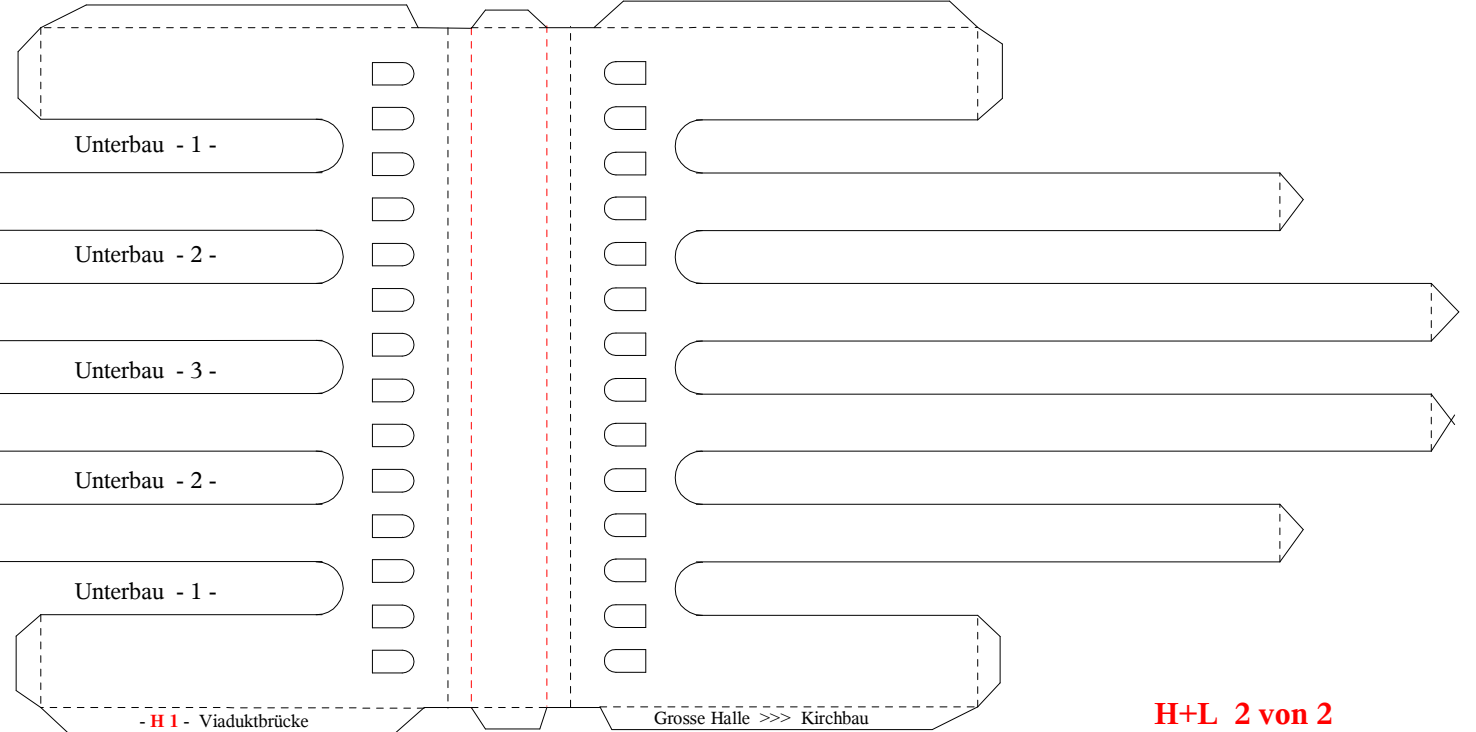
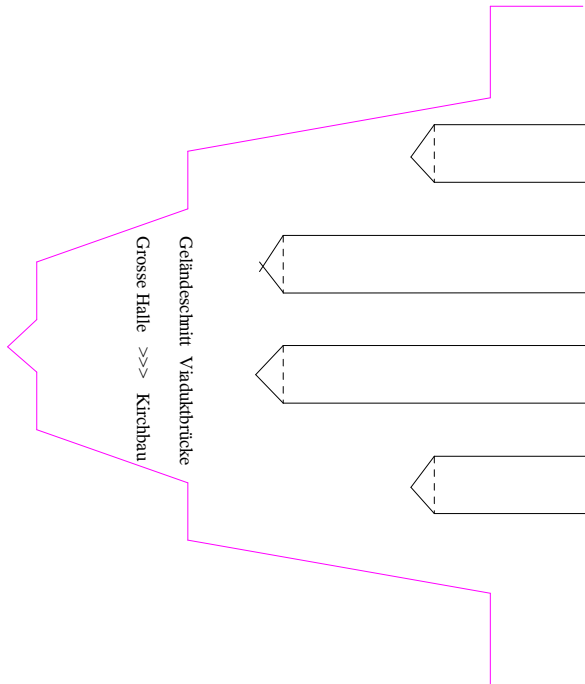


6 Dachgauben
(+ 3 Reserve)





L 1 - Brücke Turm > Kirchbau



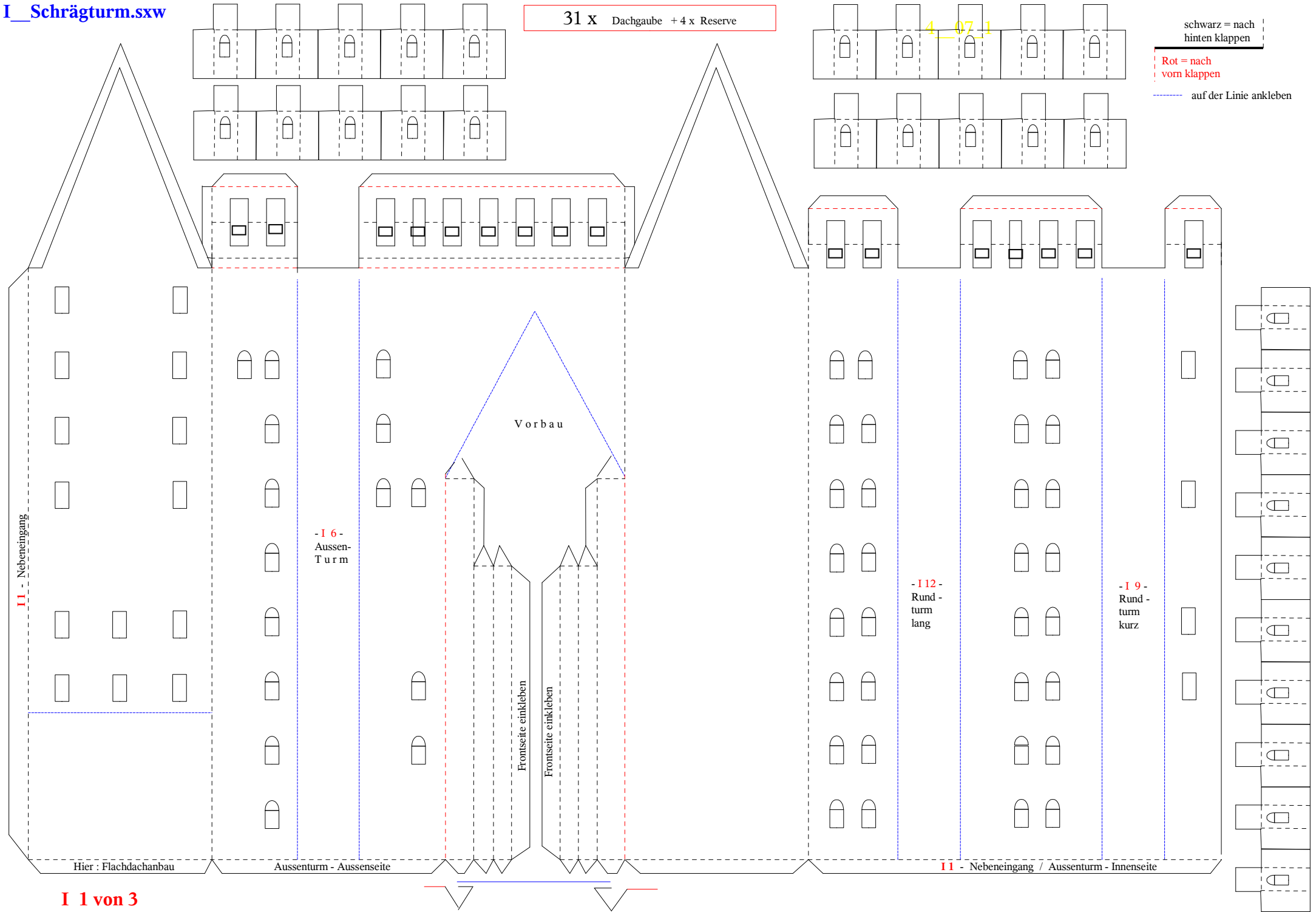
31 x Dachgaube + 4 x Reserve

4 07 1

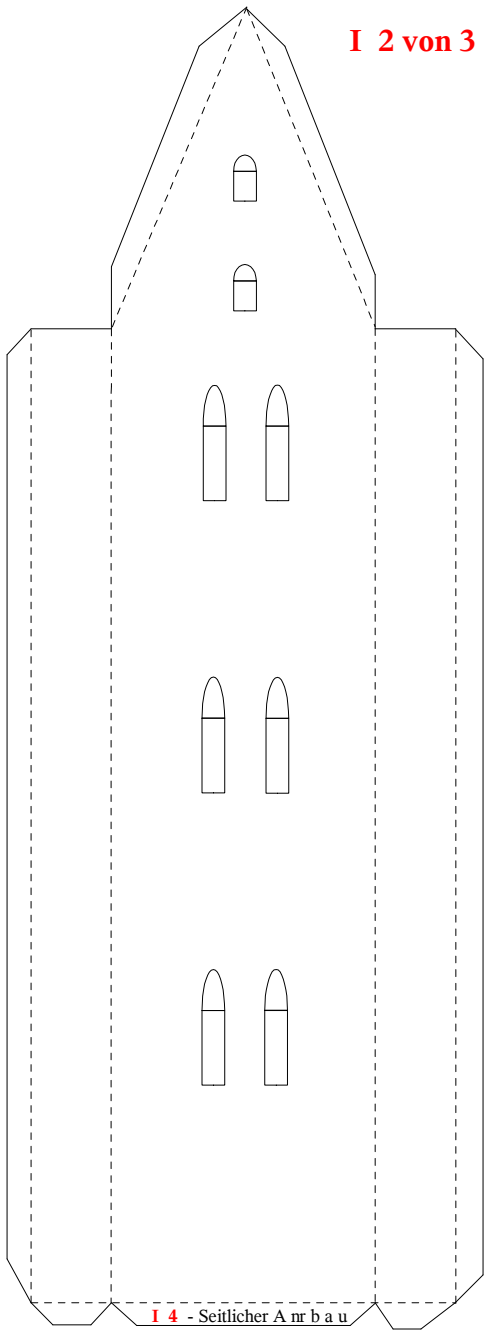
schwarz = nach hinten klappen

Rot = nach vorn klappen

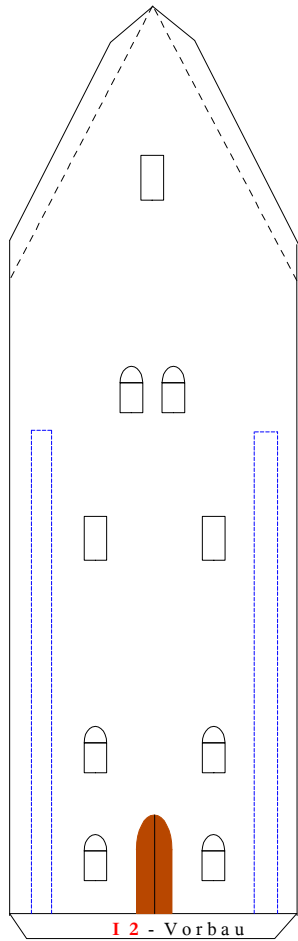
--- auf der Linie ankleben



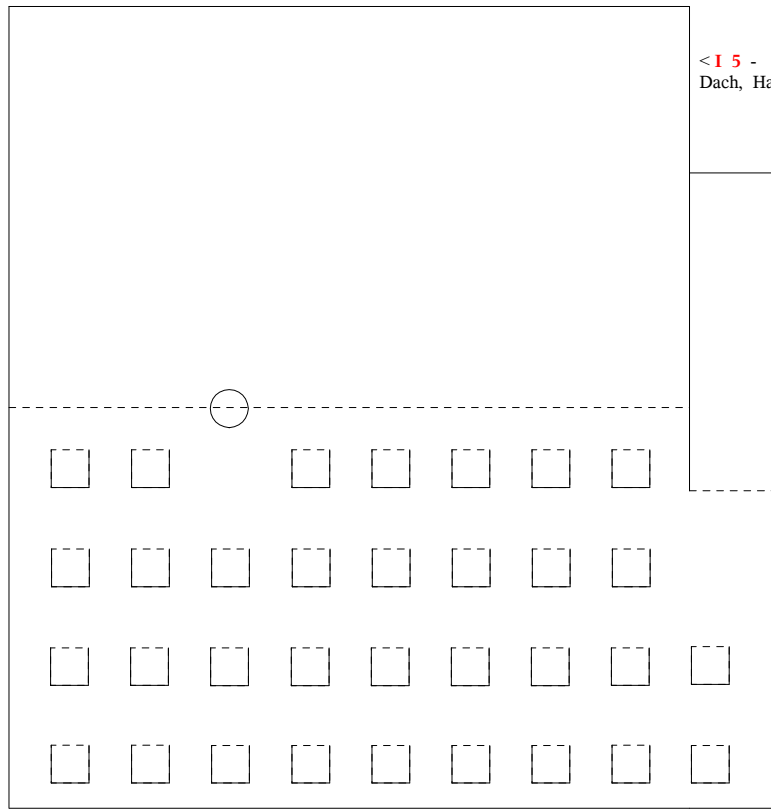
I 2 von 3



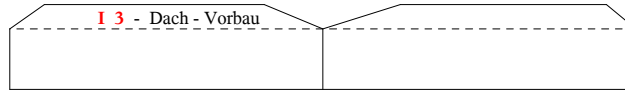
I 4 - Seitlicher A nr b a u



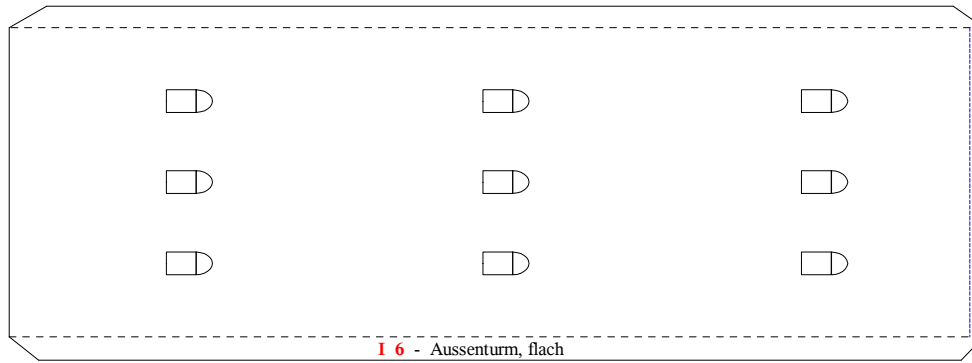
I 2 - Vorbau



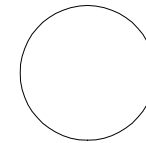
<I 5 -
Dach, Haus



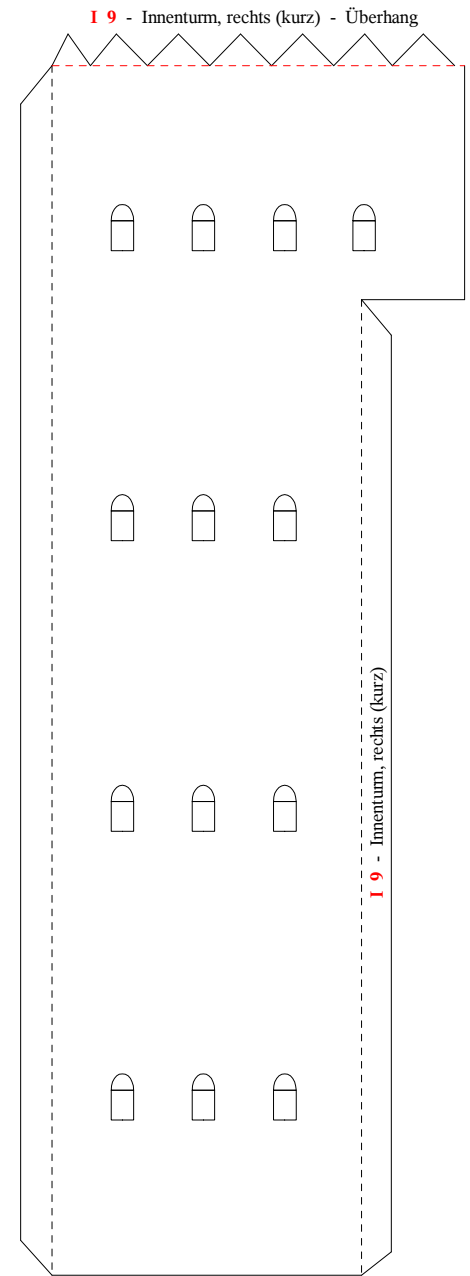
I 3 - Dach - Vorbau



I 6 - Aussenturm, flach

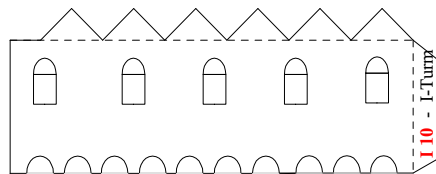
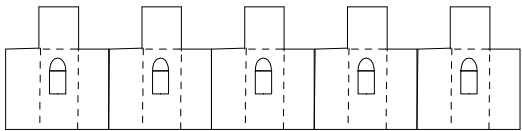


I 8 - Aussenturm,
flach, Deckplatte

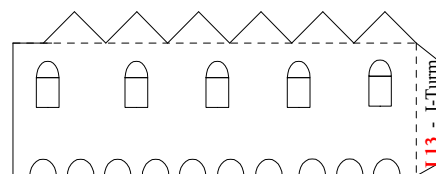


I 9 - Innenturm, rechts (kurz) - Überhang

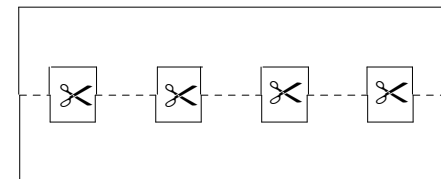
I 9 - Innenturm, rechts (kurz)



I 10 - I-Turm

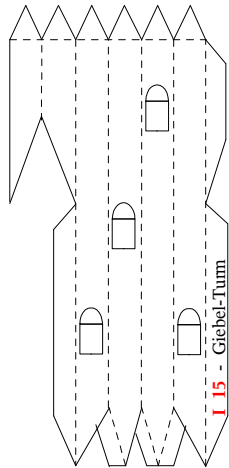
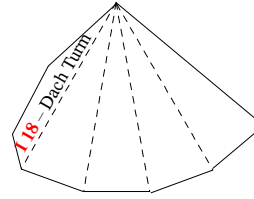
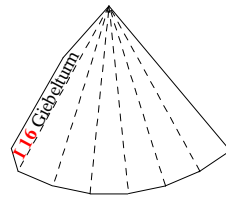
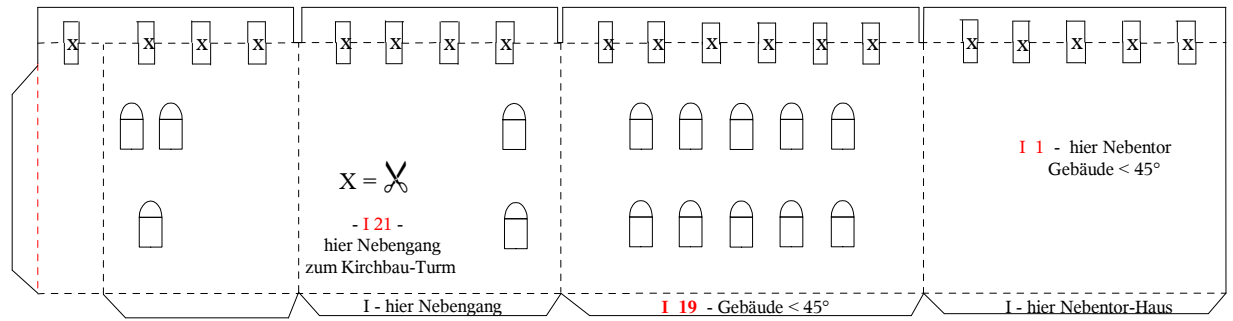
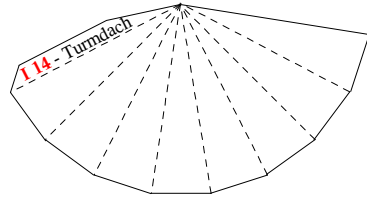
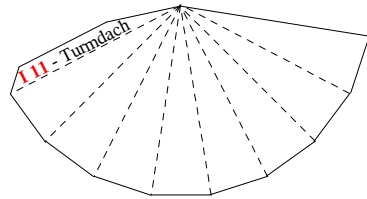
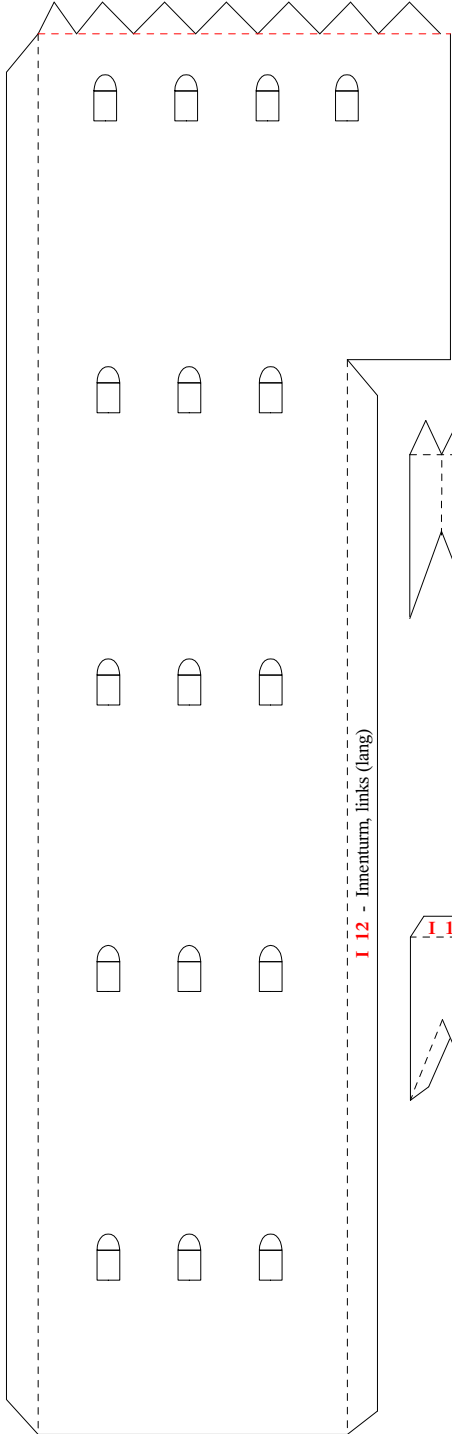


I 13 - I-Turm



I 7 - Aussenturm,
Krone / Überhang

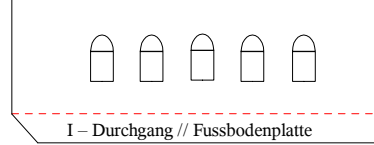
I 12 - Innenturm, links (lang) - Überhang



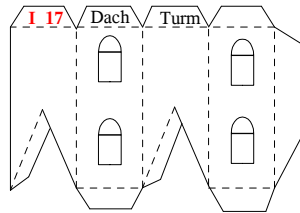
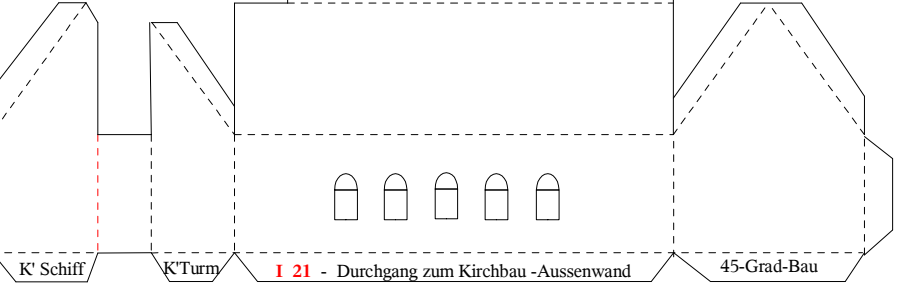
- I 22 - Fussbodenplatte Bogengang



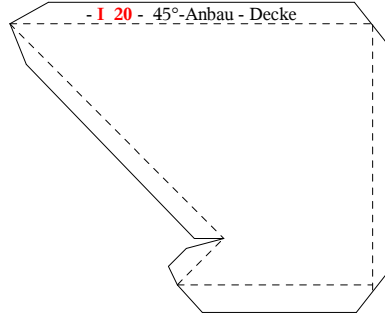
I - Durchgang > Kirchbau - Hofseite



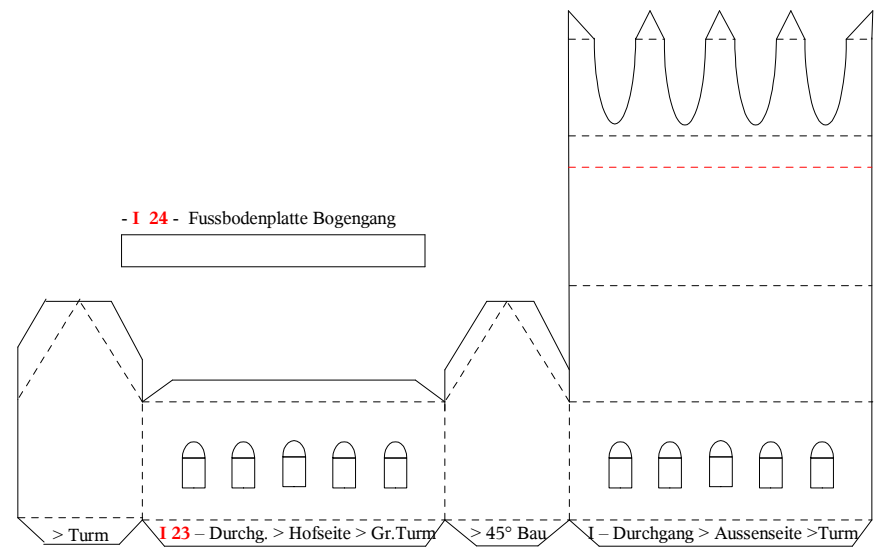
I - Durchgang // Fussbodenplatte



- I 20 - 45°-Anbau - Decke

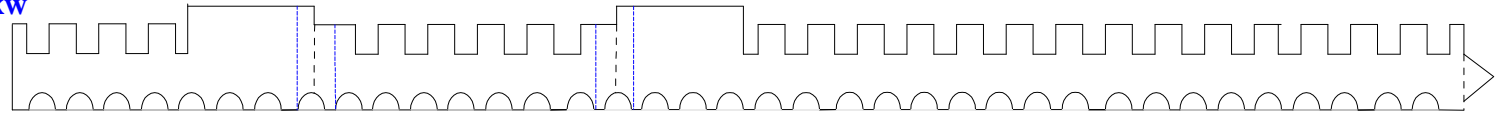
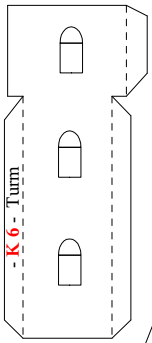
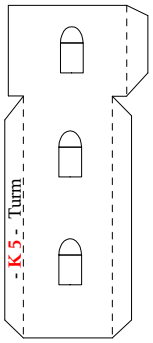


- I 24 - Fussbodenplatte Bogengang



I 3 von 3

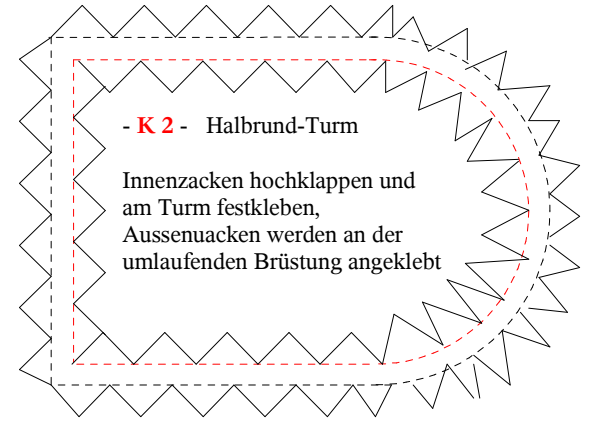
K_Halbrund-Turm.sxw



K 3 - Mauerbrüstung, Turm, oben

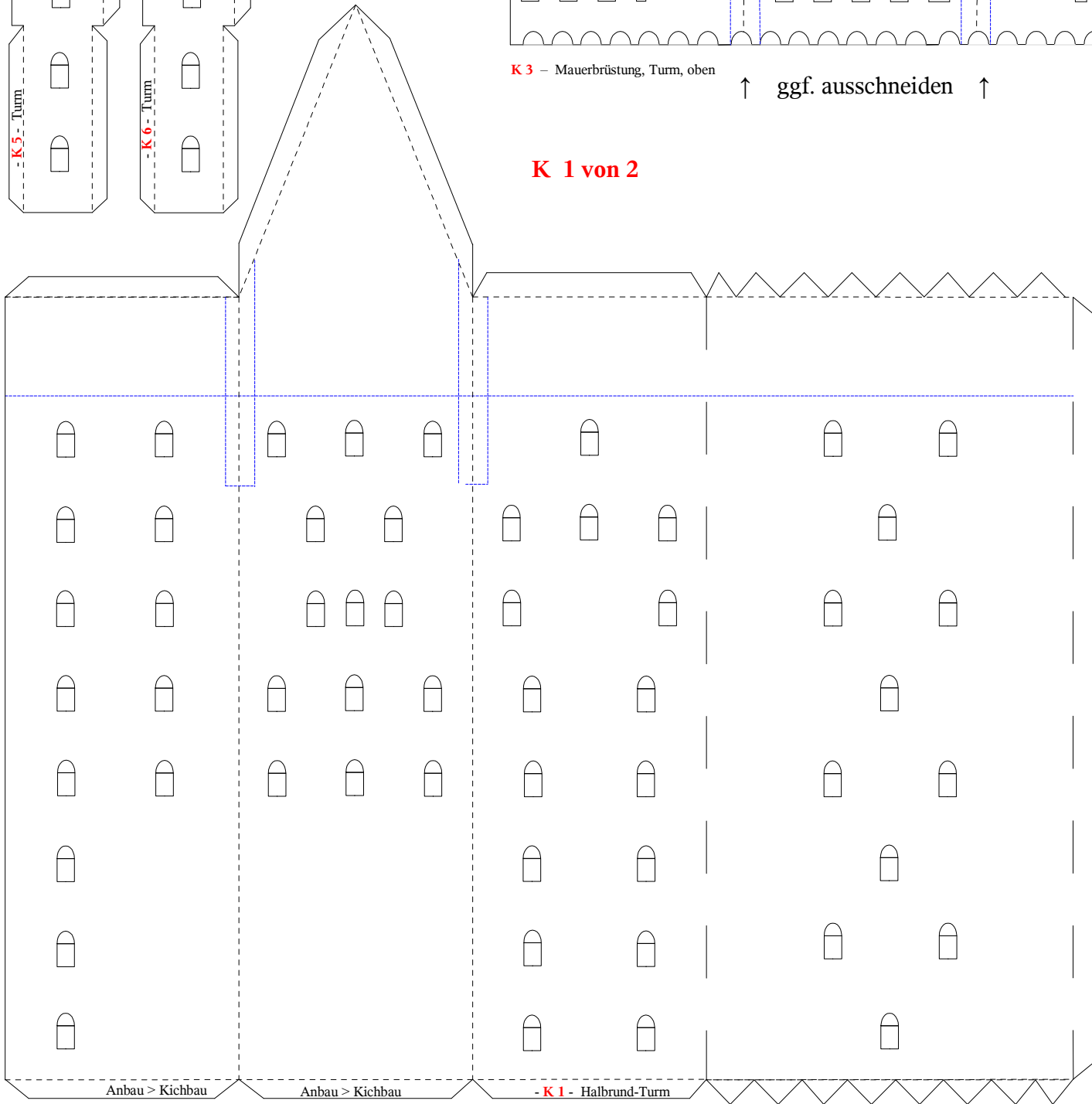
↑ ggf. ausschneiden ↑

K 1 von 2

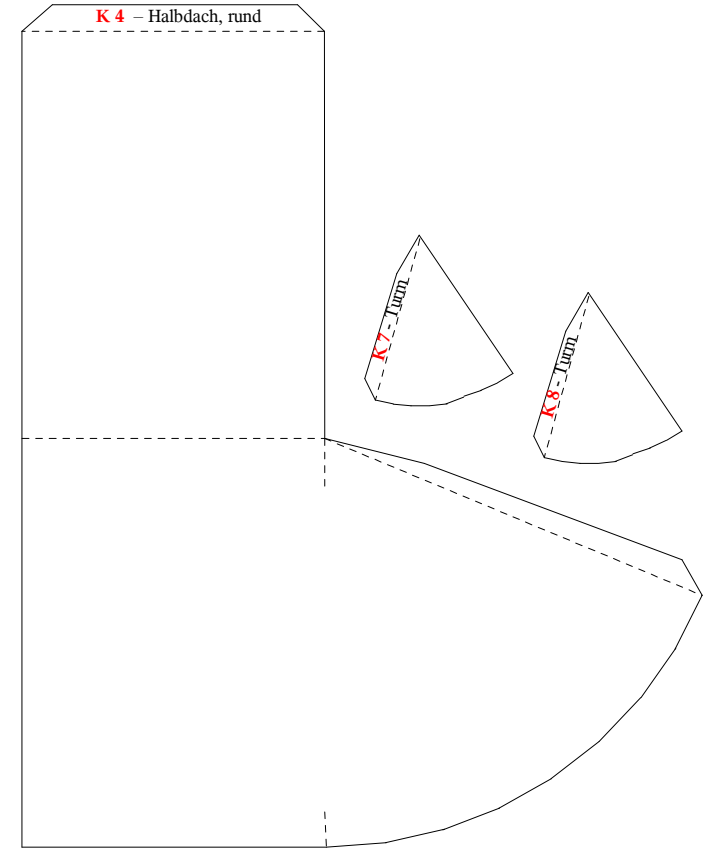
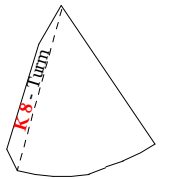
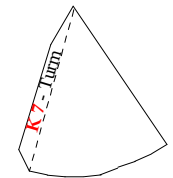


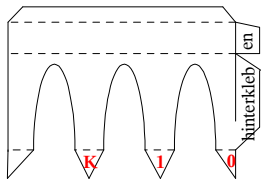
- K 2 - Halbrund-Turm

Innenzacken hochklappen und am Turm festkleben, Aussenuacken werden an der umlaufenden Brüstung angeklebt

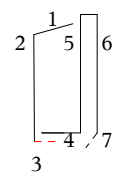


K 4 - Halbdach, rund



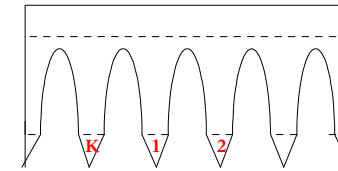


K 10 Bogengang

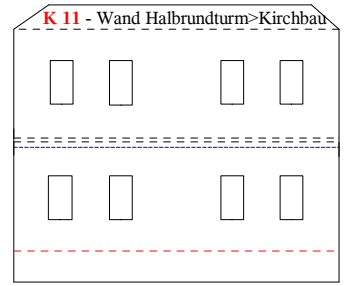


- 1 - Dach
- 2 - Bogenmauer
- 3 - unterkleben !!!
- 4 - Fussboden
- 5 - Innenm,auer
- 6 - Aussenmauer
- 7 - Bodenlasche

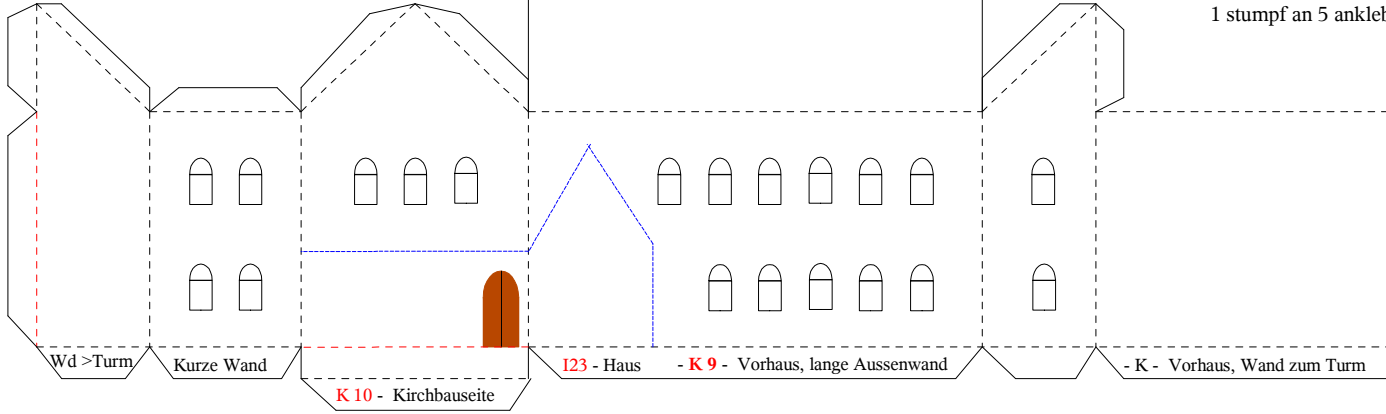
1 stumpf an 5 ankleben



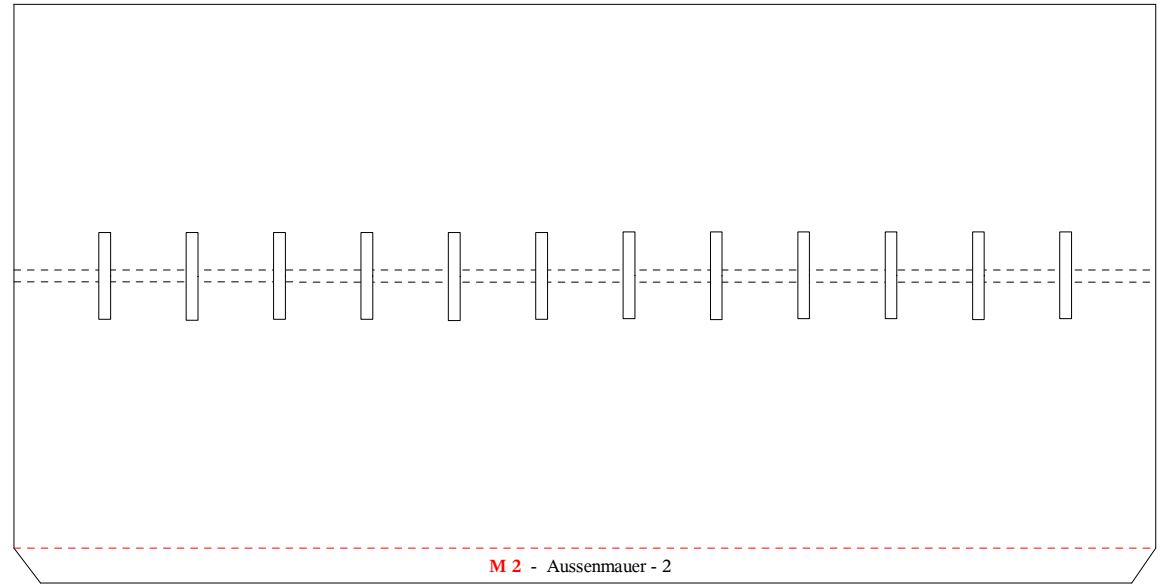
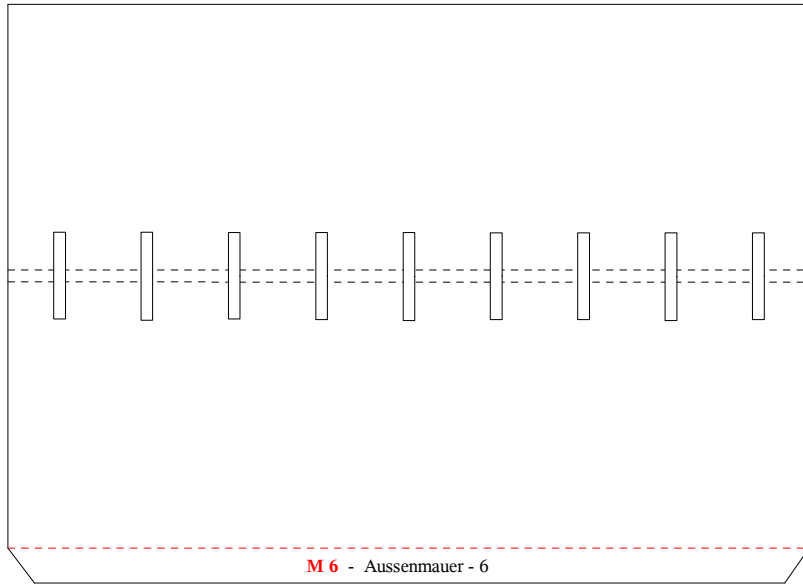
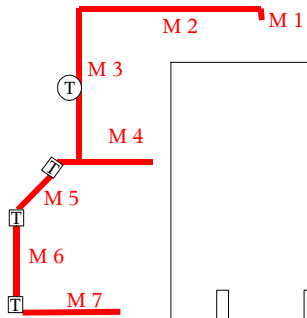
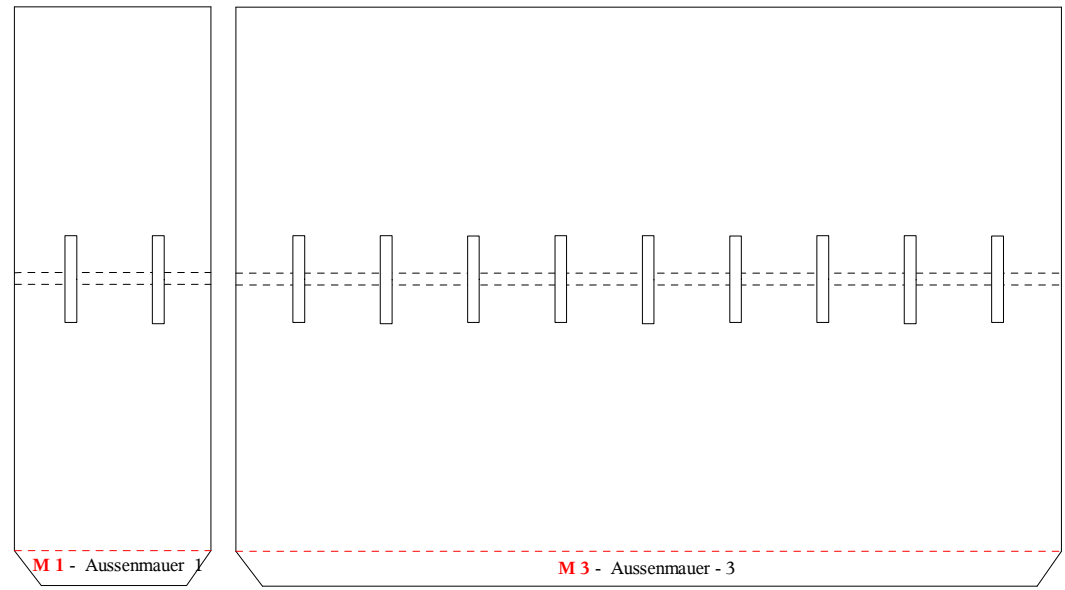
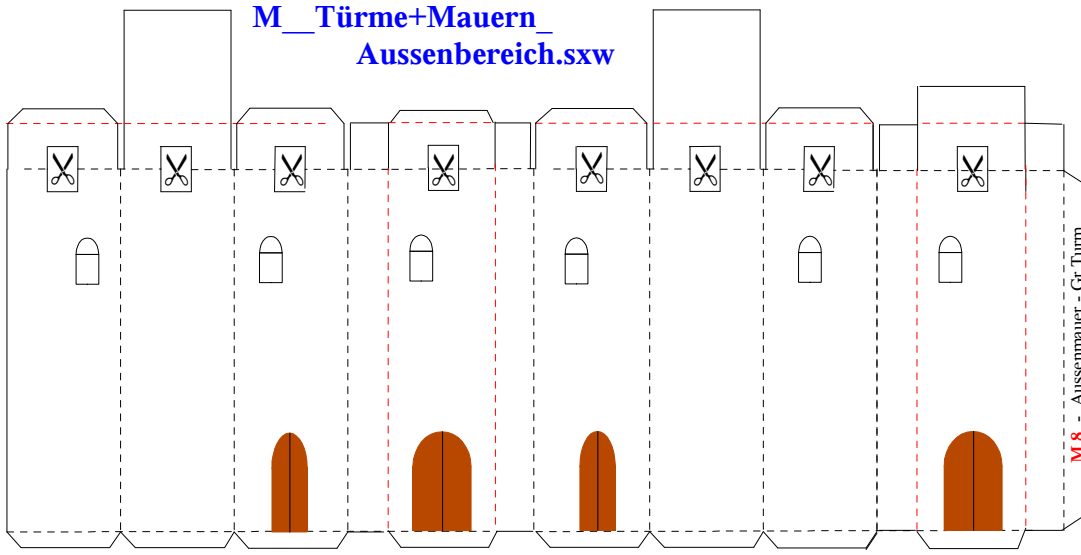
K 12 Bogengang



K 11 - Wand Halbrundturm>Kirchbau

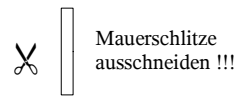


M_Türme+Mauern_ Aussenbereich.sxw



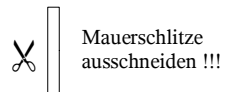
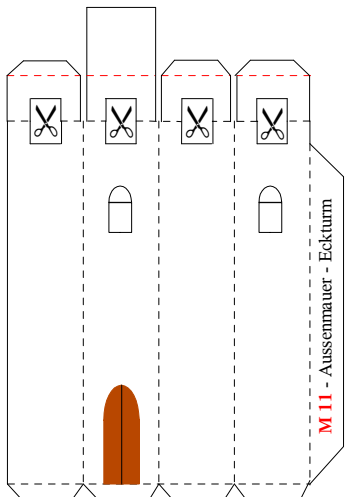
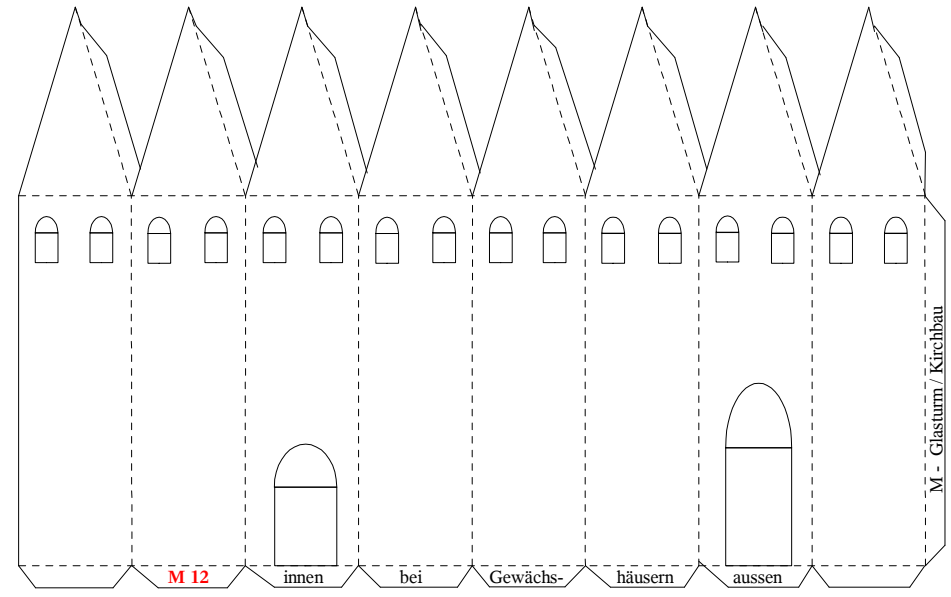
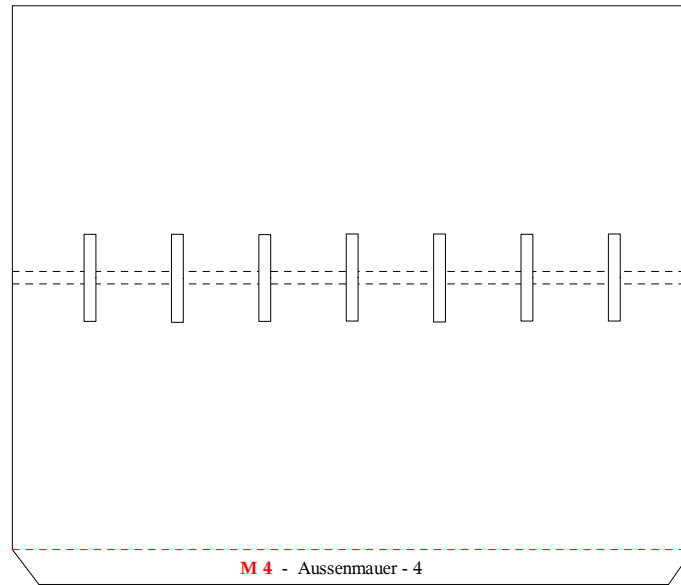
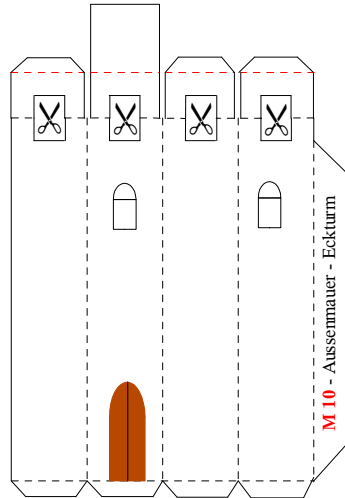
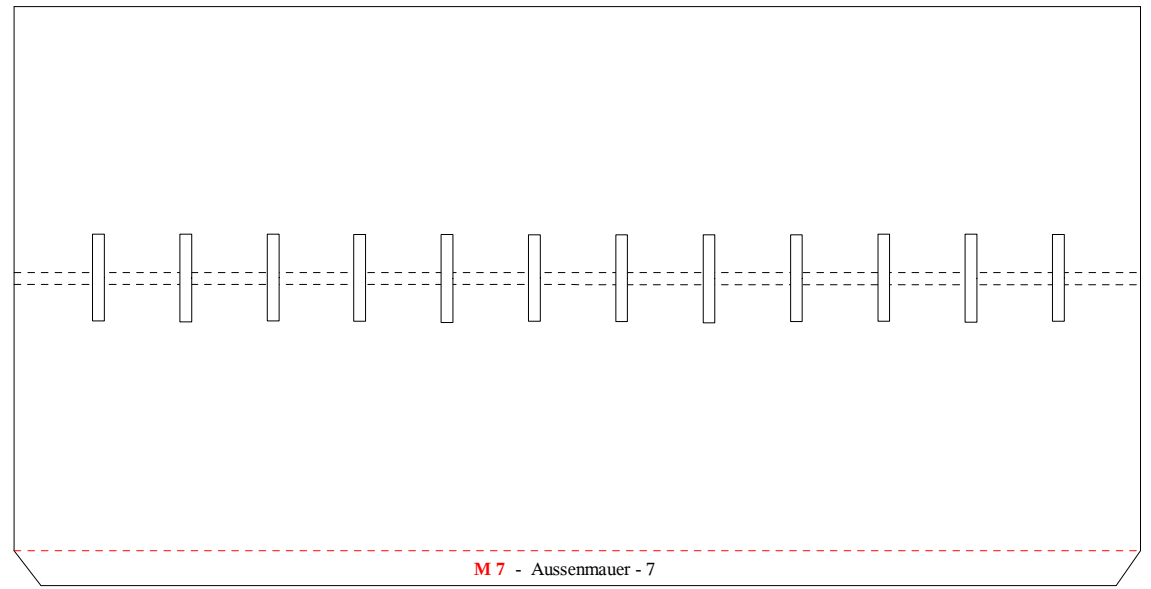
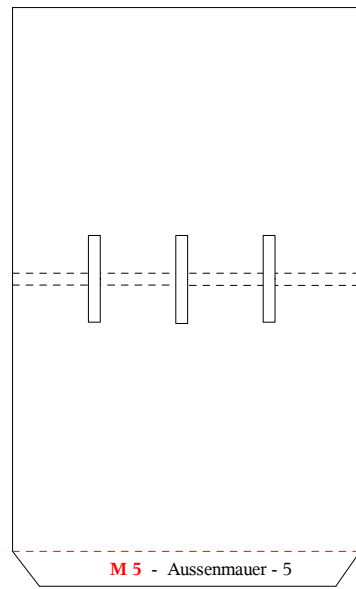
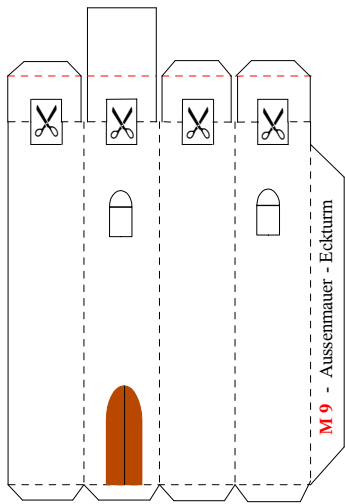
Mauerdaten : H = 35 mm

1. 26 mm
2. 151 mm
3. 109 mm
4. 90 mm
5. 46 mm
6. 106 mm
7. 149 mm



M 1 von 2

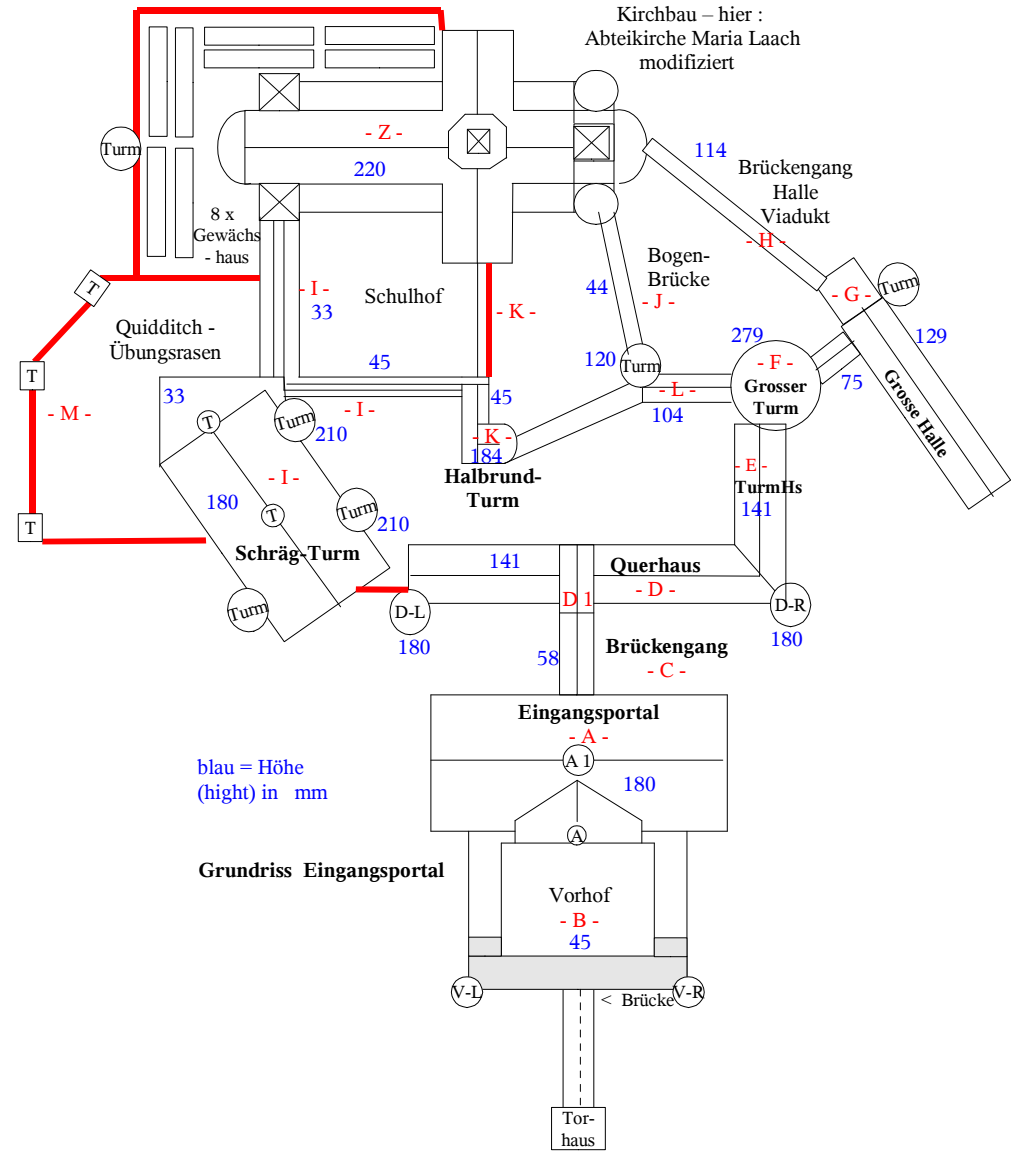




M 2 von 2

Grundriss Hogwarts

(weder detailgetreu, noch authentisch,
da einige Bauten fehlen) –
Maszstab 1 : 160



Die Grundrisse sind den Harry-Potter-Filmaufnahmen entnommen, soweit dies überhaupt möglich ist. Die Filme Teil 1 – 5 haben unterschiedliche Bebauungen. Daher ist ein endgültig festgelegter Grundriss hier nicht möglich.

Der Kirchbau ist ein modifizierter Aufbau des Schreiberbogens Nr. 548 im Maszstab 1:300, der sich aber gut einfügt.

Alle anderen Bauten sind von mir nach den Filmaufnahmen nachempfunden. Dabei ist es wichtig, dass die einzelnen Gebäude NICHT direkt erreichbar sind, da es sich um einen tiefgeklüfteten Felsen handelt (daher die Brücken)

The plans are taken from the Harry-Potter-movies part 1 to 5, as far as it was possible at all, because they have used different buildings / locations. So, a final design is impossible.

The churchbuilding is a modification of "Schreiber Modellbaubogen", No. 548 in scale 1:300, which fits excellent in here.

All other buildings are made by me just watching the movies. It is important to know, that the buildings can't be reached directly because of the rocks, the castle is built on (that's why they use bridges).



Klaus – D. Weber
Harzhof 12
24363 Holtsee

eMail : klaus-d.weber@gmx.de

gezeichnet : Juni 2008